



Addendum No. 5

Project: Salem Community Schools
2021 FEMA Safe Room Additions

Project No.: 202020.01/02

Subject: Addendum No. 5

Date: May 3, 2021

This addendum is a part of the bid documents. Acknowledge receipt on the proposal form.

GENERAL

1. Intent is for the existing fire alarm system to remain operational while the building is occupied. If the fire alarm panel must be shut down, this work shall either be performed when the building is not occupied or a fire watch must be provided.
2. Horizontal joint reinforcement at exterior CMU walls at both high school and middle school buildings shall be continuous across control joints and all voids shall be grouted solid for impact protection.
3. Refer to attached Shroud Tate Wilson document for mechanical, plumbing, and electrical items.

SPECIFICATIONS

4. 08 71 00 (Finish Hardware),
Article 2.05, Paragraph M, add the following:
 7. Provide Pemko 2009APK Latching Panic Exit Saddle Threshold at pairs of doors with sound seals.Article 2.05, replace Paragraph O with the following:
 - O. Seals/Gaskets (used for Sound Seals):
 1. All sound seal sets at single, interior doors shall be:
 - a. Pemko STCSET - 1A (STC411 Automatic Door Bottom, S773 @ jambs and header, S44 @ jambs and header, and ACP112 @ frame bottom corners) or approved equal.
 2. All sound seal sets at pairs of interior doors shall be:
 - a. Pemko Sound Seal System 13 (2009APK threshold, 303AS meeting style - both sides, S88 meeting style - 4 rows, S88 @ jambs and header, S773 @ jambs and header, S44 @ frame rabbit close to door face, and ACP112 corner pads) or approved equal.

Article 2.05, replace Paragraph U with the following:

U. Automatic Door Bottoms:

1. All automatic door bottoms shall be the following (or approved equal):
 - a. Pemko STC411 (full-mortise)
 - b. Pemko STC4131 (face-mount application)
2. Typically provide full-mortise automatic door bottom, unless there is a compatibility issue with the door construction. When an issue occurs, provide a face-mounted automatic door bottom; coordinate with Architect.
3. Provide clear anodized aluminum finish at face-mounted automatic door bottoms.

Article 2.05, replace Paragraph X with the following:

X. Electromagnetic Door Holders:

1. Shall be provided by Section 08 71 00. Refer to notes regarding Tornado Resistant Assemblies for basis of specification product and tested assembly notes.



Addendum No. 5

2. All door holders shall be wall mounted, unless otherwise noted. Provide door armature extensions as required.
3. Coordinate installation and other requirements with Section 28 31 11 - Digital, Addressable Fire Alarm System contractor as required.

Article 2.07, Hardware Set #5: add Electromagnetic Door Holder (each leaf)

Article 2.07, Hardware Set #7: add Electromagnetic Door Holder

Article 2.07, Hardware Set #14: add Threshold (Latching Panic Exit for sound seal)

Article 2.07, Hardware Set #16: add Automatic Door Bottom and Sound Seals

Article 2.07, Hardware Set #17: change Push/Pull to Rim Panic Device (Lever function); add Automatic Door Bottom and Sound Seals

Article 2.07, Hardware Set #18: add Automatic Door Bottom

Article 2.07, Hardware Set #19: add Automatic Door Bottom

Article 2.07, Hardware Set #21: add Threshold (Latching Panic Exit for sound seal)

5. 09 72 00.02 (Presentation Dry Erase Wallcovering), Article 2.02, Add "Idea Paint" ALL-IN-ONE as an approved equal to original specification.
6. 09 90 00 (Painting), Article 3.06, add Paragraph R as follows:
 - R. Wall paint in the following rooms shall be rolled (not sprayed) for acoustical benefits: Choir 101, Practice 104, Practice 105, Band Room 116, Practice 117, Practice 118, Ensemble 119, Ensemble 120, and Recording 127.

VOLUME 1 DRAWINGS (HIGH SCHOOL)

7. Drawing C201 -
Refer to attached Drawing AD-5f for perforated drainage piping (indicated as bold, dashed line) added at site retaining walls.
Refer to attached Drawing AD-5g for perforated drainage piping (indicated as bold, dashed line) added at building foundations in northeast corner.
Provide a concrete head wall per Detail 1/AD-5i at outlet of Pipe D and outlet of Pipe E.
8. Refer to attached Drawing AD-5i for concrete head wall detail.
9. All Floor Plan Drawings - Concessions 121: Add a hand wash sink and replace the 2-bowl sink with a 3-bowl sink as shown on attached Drawing AD-5e. Refer to STW addendum items for additional information.
10. Drawing A201 - Add R6 soap dispenser and R8 paper towel dispenser at new hand wash sink in Concessions 121.
11. Drawing A501 - Refer to attached Drawing AD-5c for brick expansion joint locations.
12. Drawing A702 - Section 1: add a 4" diameter perforated pipe with geo textile fabric wrap on top of footing and stone drainage back fill, see Civil Drawings for routing and additional information.
13. Drawing A703 - Section 2: add a 4" diameter perforated pipe with geo textile fabric wrap on top of footing and stone drainage back fill, see Civil Drawings for routing and additional information.
14. Drawing Q201 - Replace Elevation 1 per attached Drawing AD-5d. Changes have been made to accommodate 3-bowl sink.

VOLUME 2 DRAWINGS (MIDDLE SCHOOL)

15. Drawing G101: Code Summary Table, Travel Distance: Replace 88'-0" with **99'-0"** actual maximum travel distance to match the distance indicated on the floor plan.
16. Drawing C101: Keynote 2: See 1/C-401 for new to existing concrete walk detail.



Addendum No. 5

17. Drawing U100: As a general clarification, the (2) existing downspouts (at southeast corner of existing 2 story building, west of new generator enclosure) through new concrete walk shall remain and the associated existing storm line shall remain.
Provide downspout to storm piping PVC transition cap as required at each new downspout. Coordinate with downspout and storm piping sizes.
18. Drawing S500: Detail 3/S500: The horizontal reinforcing shall not stop at each side of control joint. Horizontal reinforcing shall continue through any CMU control joints.
19. Drawing A301: As a general clarification, new gutters shall be 7" wide.
20. Drawing A602: Detail 2/A602: The section is mislabeled, replace Office B104 (far right) with "Vestibule B116" and replace Office B104 (second from right) with Hall B115.
21. Drawing A706: Detail 3/A706: As a general clarification, existing pre-cast panel shall be minimally cut through as required for new canopy steel framing. Install backer rod and seal both sides (interior and exterior) between new steel framing and cut opening at existing pre-cast panel. See structural details.
22. Drawing A801: As a general clarification, door elevations 2 & 3 are not used.
Remove the lite from door elevation 4.
Hollow Metal Frame elevation T: Revise per AD-5h.
Aluminum Storefront Frame elevation 04: Revise per AD-5h.
Tornado Shutter Schedule: Replace 8'-8" door height with 7'-8".
Door Schedule: Door B111: Add note "R2".
Detail U/A801: 8" CMU will not be touching 12" CMU as shown but will have a space at the jamb (similar to space at head shown on V/A801. Provide and install 16 gauge steel closure trim to cover gaps on both sides of jamb. Paint steel closure trim to match adjacent wall. See AD-3e (16/A801 Volume 1) for similar detail.
Detail V/A801: Provide and install 16 gauge steel closure trim to cover gap at head between 8" and 12" CMU. Paint steel closure trim to match adjacent wall. See AD-3e (15/A801 Volume 1) for similar detail.
23. Drawing Q-201 - Prep Area B103 Casework Elevation: revise Elevation per attached drawing AD-5a.
24. Drawing I101:
Specialty TS: Replace "shudder" with "shutter".
Storage B105: Replace "AC1" with "Exposed Structure".
Revise Finish Schedule and Finish Plan per attached drawing AD-5b.
25. Drawing I302: Detail 1/I302: Tall windows are shorter than original design. See AD-5h. Provide and install acoustic wall panel above revised window opening to match the top of adjacent acoustic wall panel.
26. Drawing P101: The electric water cooler outside of Custodian B111 is "EWC1A".
27. Drawing P502: Add EWC1A to sanitary and domestic water riser diagrams. See Plumbing Schedule for piping sizes.

Prepared by,

John A. Hawkins, AIA





Addendum No. 5

End of Addendum No. 5 (26 total pages w/ attachments)

Enclosures: Shrout Tate Wilson MEP addendum items, Drawings AD-5a, AD-5b, AD-5c, AD-5d, AD-5e, AD-5f, AD-5g, AD-5h, AD-5i

file: 202020.01,02/E-1

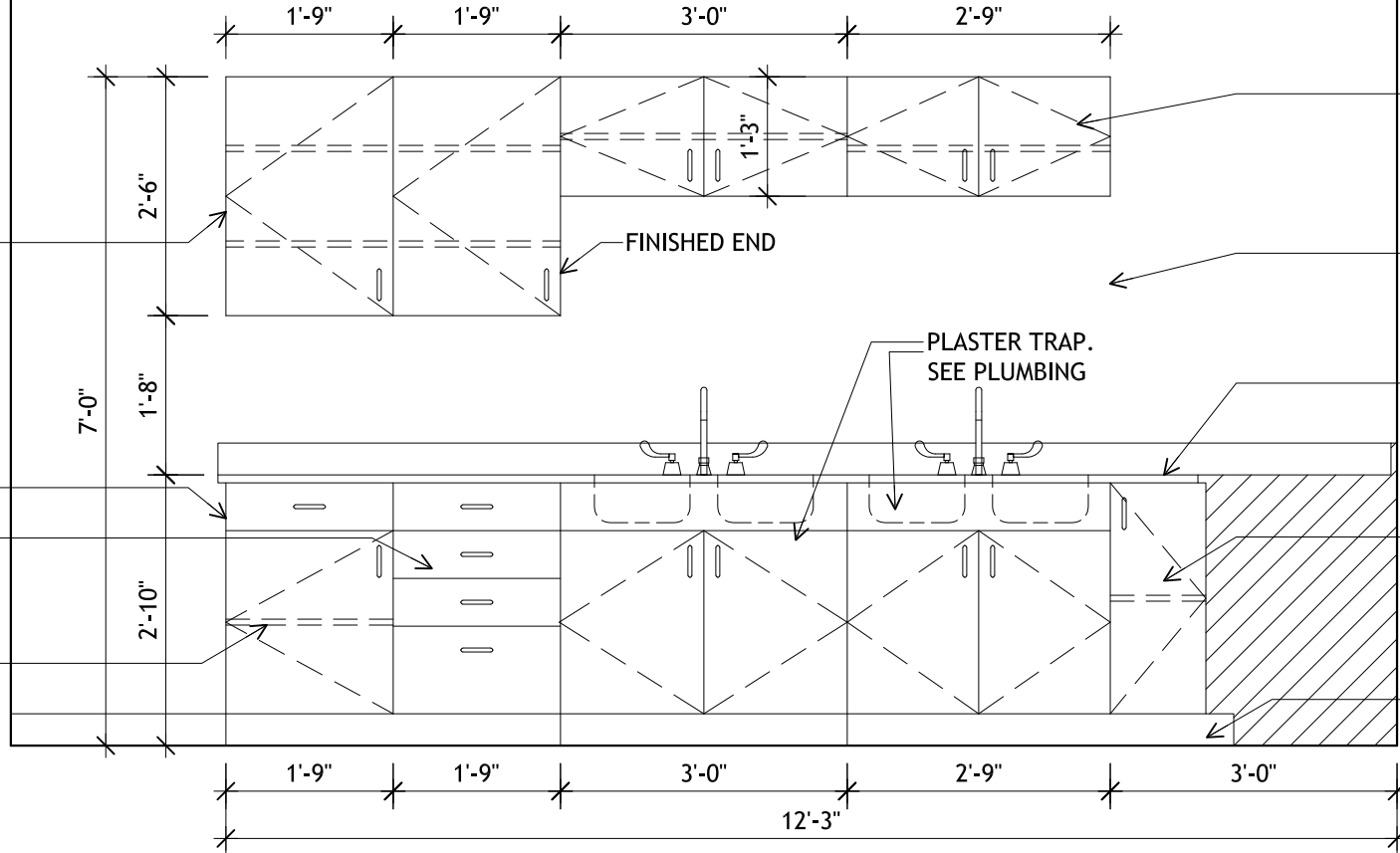
SCHED. WALL
FINISH

FINISHED END

FINISHED END

24" DEEP PLASTIC
LAMINATE 4
DRAWER BASE
CABINET

24" DEEP PLASTIC
LAMINATE BASE
CABINET W/ ADJ.
SHELF & DRAWER



14" DEEP PLASTIC LAMINATE
WALL CABINET W/ 2
ADJUSTABLE SHELVES

FINISHED END

PLASTER TRAP.
SEE PLUMBING

SOLID SURFACE COUNTERTOP
& SPLASHES. SINK. SEE
PLUMBING.

24" DEEP PLASTIC LAMINATE
CORNER CABINET

SCHED. BASE

2

Prep Area B103

Q-201

full size plot scale: 1/2"=1'-0"

AD-5a

Sheet

Salem Community Schools - 2021 FEMA Safe Room Additions
Salem Middle School (Volume 2)
1001 N. Harrison Street
Salem, Indiana 47167



Revisions Δ 05/03/2021

- 2
- 3
- 4
- 5
- 6

Certified By

John A. Hawkins

Drawn AH

Checked By jh

Project No. 202020.02

Date 03/23/2021



630 Walnut Street
Jeffersonville, IN 47130
812. 282. 9554
812. 282. 9171 FAX
www.koverthawkins.com

© COPYRIGHT BY KOVERTHAWKINS
ALL RIGHTS RESERVED

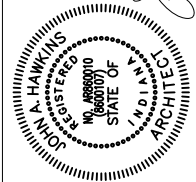
630 Walnut Street
Jeffersonville, IN 47130
812. 282. 9554
812. 282. 9171 FAX
www.koverthawkins.com



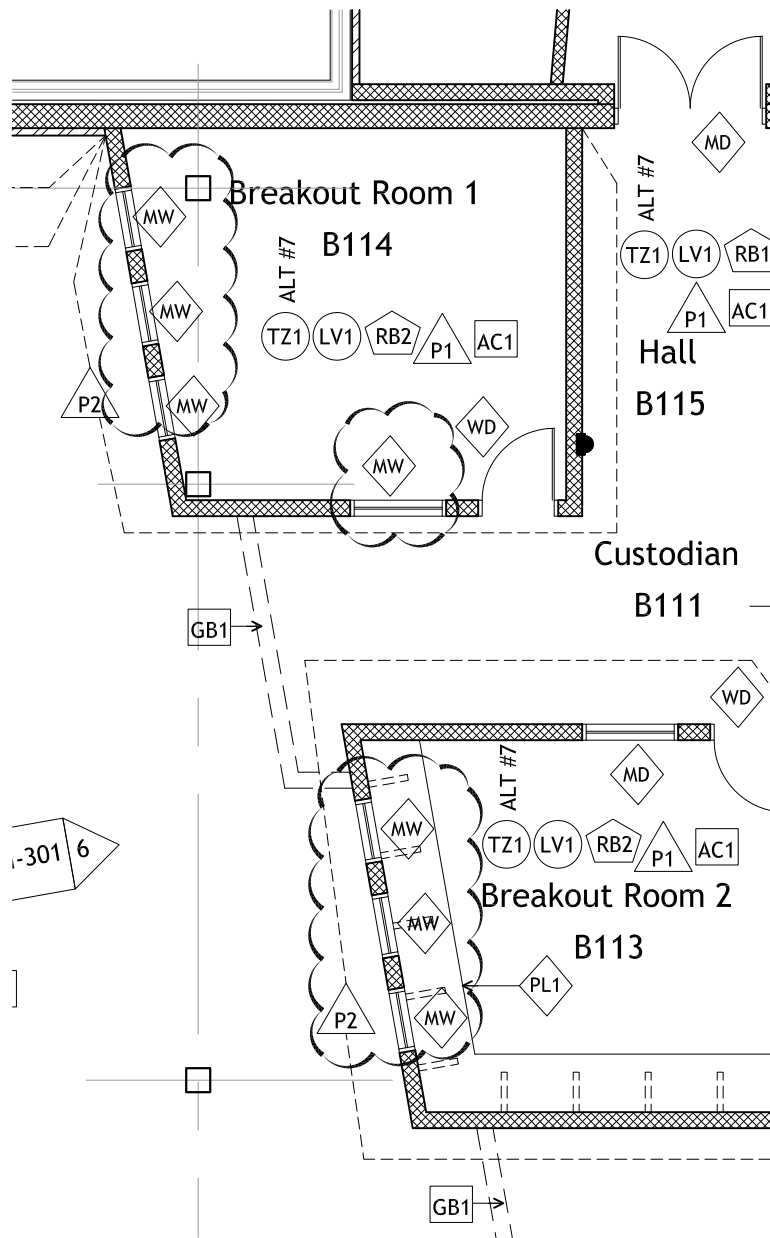
KovertHawkins
architects

Drawn AH
Checked By jh
Project No. 202002.02
Date 03/23/2021

Revisions
1 05/03/2021
2
3
4
5
6



Prepared by
John A. Hawkins



Finish Plan

full size plot scale: 1/8"=1'-0"

0 4'-0" 8'-0"

FINISH SCHEDULE



Specialties Cont'd



METAL DOOR AND HOLLOW METAL FRAME-
FINISH PAINT, ALL INTERIOR SURFACES;
"SHERWIN WILLIAMS";
COLOR- SW6258 TRICORN BLACK;
FINISH PAINT, ALL EXTERIOR SURFACES;
COLOR- TO BE SELECTED BY ARCHITECT



METAL WINDOW FRAME-
FINISH PAINT, ALL INTERIOR SURFACES;
"SHERWIN WILLIAMS"
COLOR- SW6258 TRICORN BLACK

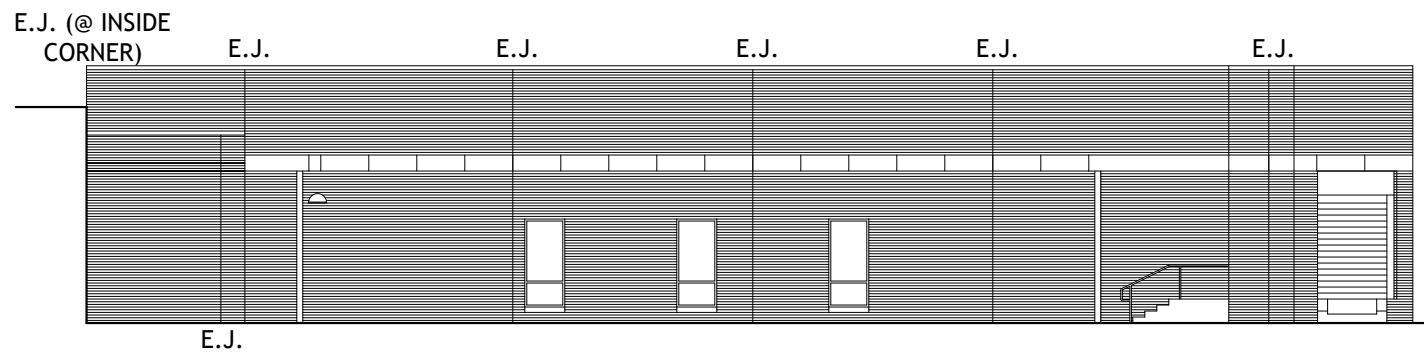
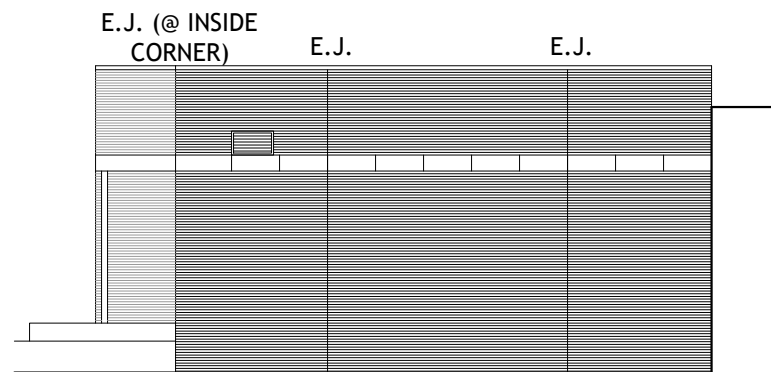


WINDOW SHADES-
SEE SPECIFICATION SECTION 12 24 00

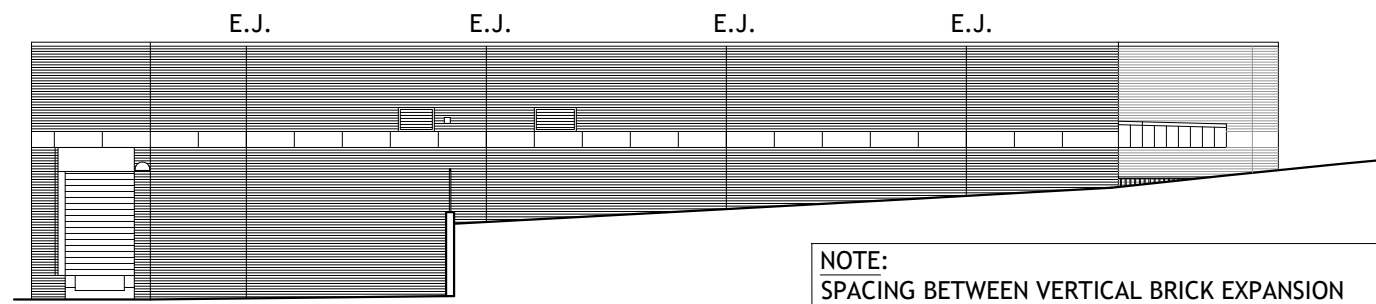
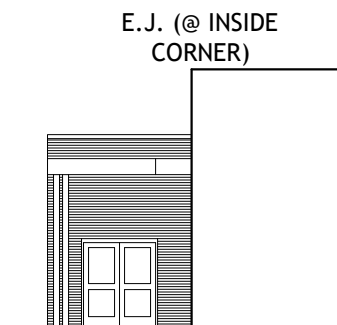
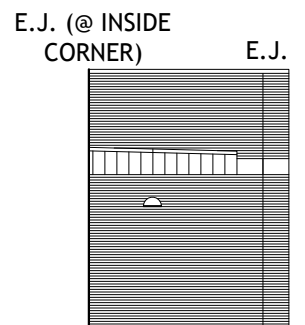
Salem Community Schools - 2021 FEMA Safe Room Additions
Salem Middle School (Volume 2)
1001 N. Harrison Street
Salem, Indiana 47167

Sheet

AD-5b



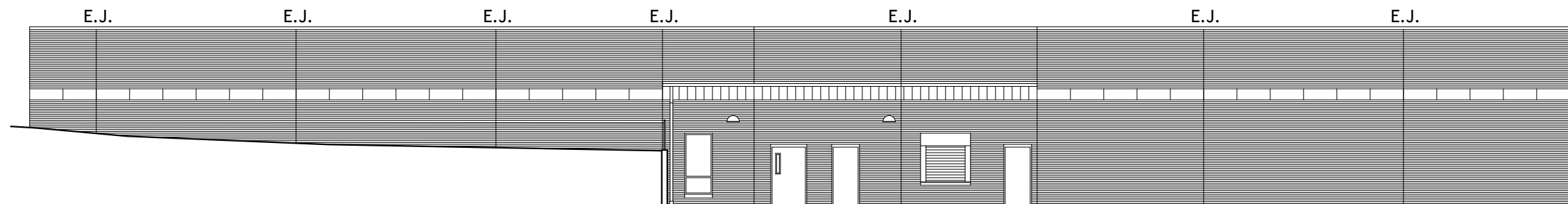
1
AD-5c Expansion Joints - North
full size plot scale: 1/16"=1'-0"



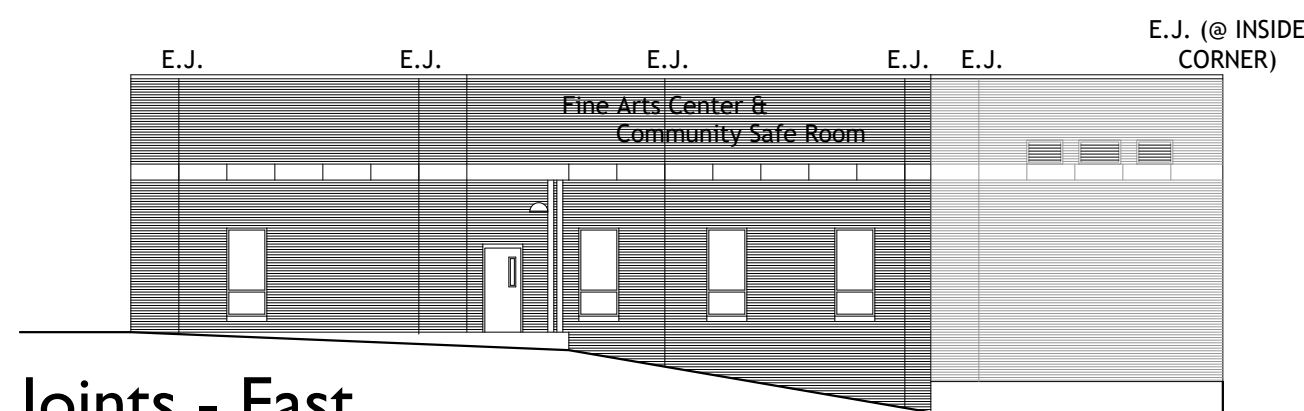
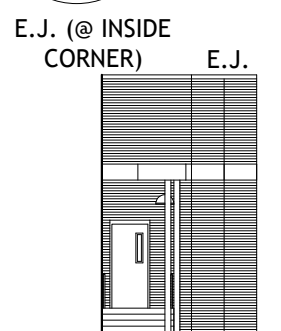
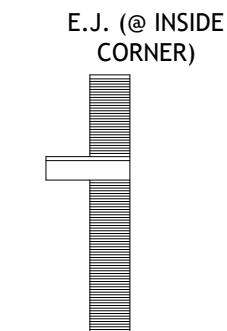
2
AD-5c Expansion Joints - West
full size plot scale: 1/16"=1'-0"

NOTE:
SPACING BETWEEN VERTICAL BRICK EXPANSION JOINTS SHALL NOT EXCEED 25'-0" IN AREAS WITHOUT OPENINGS AND 20'-0" IN AREAS WITH OPENINGS. COORDINATE EXPANSION JOINT LOCATIONS WITH LIMESTONE ACCENT BAND JOINTS.

E.J. = BRICK EXPANSION JOINT



3
AD-5c Expansion Joints - South
full size plot scale: 1/16"=1'-0"



4
AD-5c Expansion Joints - East
full size plot scale: 1/16"=1'-0"

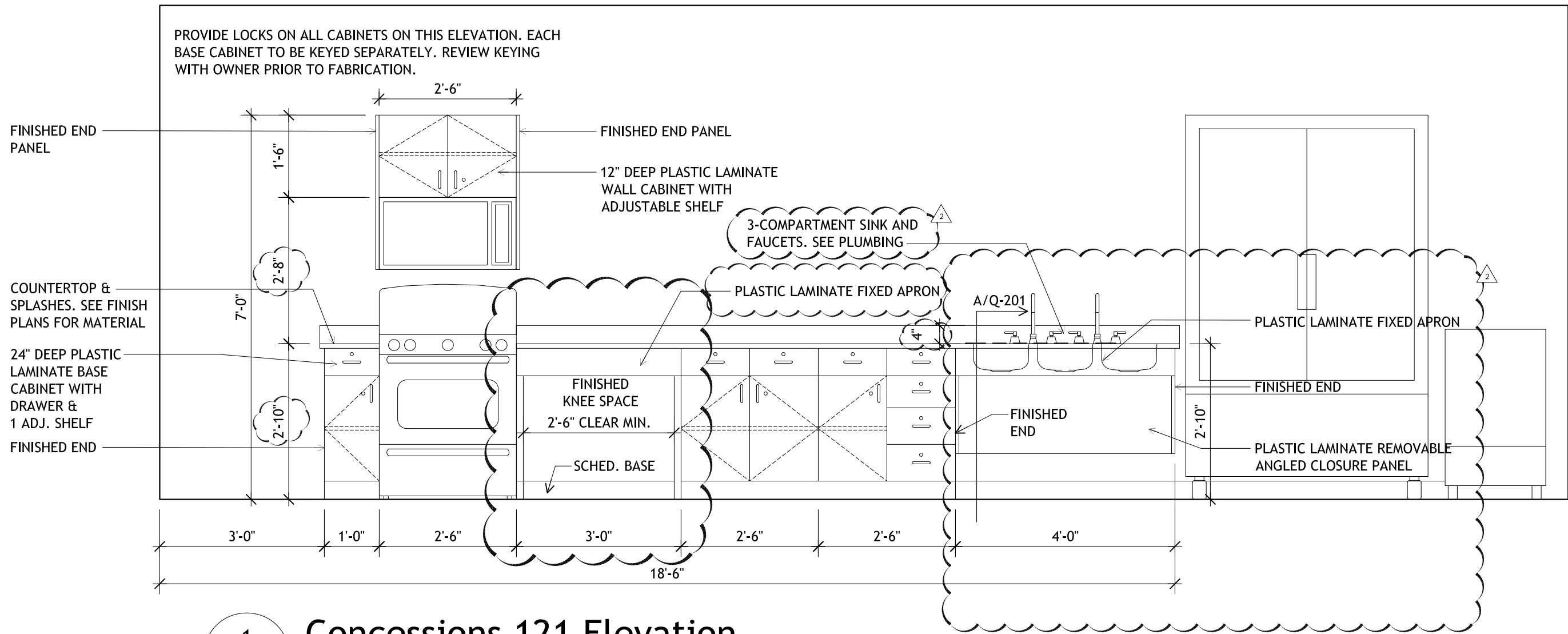
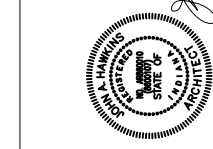


Drawn	HG
Checked By	jh
Project No.	202020.01
Date	05/03/2021

Revisions	1
	2
	3
	4
	5
	6



Drawn	AH
Checked By	Jh
Project No.	202020.01
Date	03/23/2021



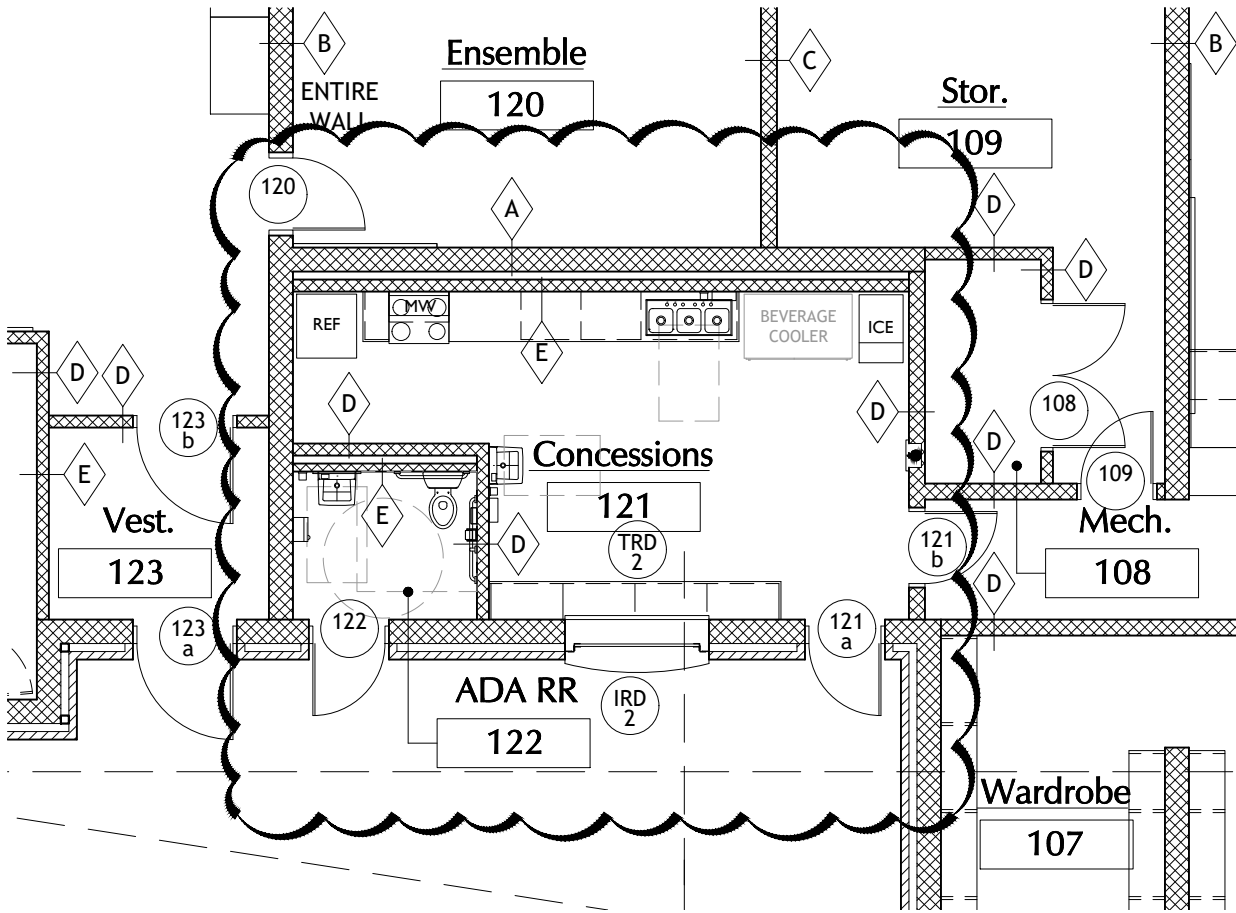
PROVIDE LOCKS ON ALL CABINETS ON THIS ELEVATION. EACH
BASE CABINET TO BE KEYED SEPARATELY. REVIEW KEYING
WITH OWNER PRIOR TO FABRICATION.

1
Concessions 121 Elevation
Q-201 full size plot scale: 1/2"=1'-0"

630 Walnut Street
Jeffersonville, IN 47130
812. 282. 9554
812. 282. 9171 FAX
www.koverthawkins.com



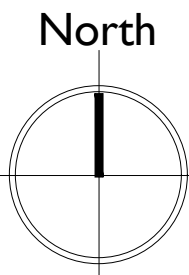
KovertHawkins
architects



Drawn	HG
Checked By	jh
Project No.	202020.01
Date	05/03/2021

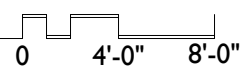
Revisions	1
	2
	3
	4
	5
	6

Certified By: *John A. Hawkins*



Partial Revised Architectural Floor Plan

full size plot scale: 1/8"=1'-0"



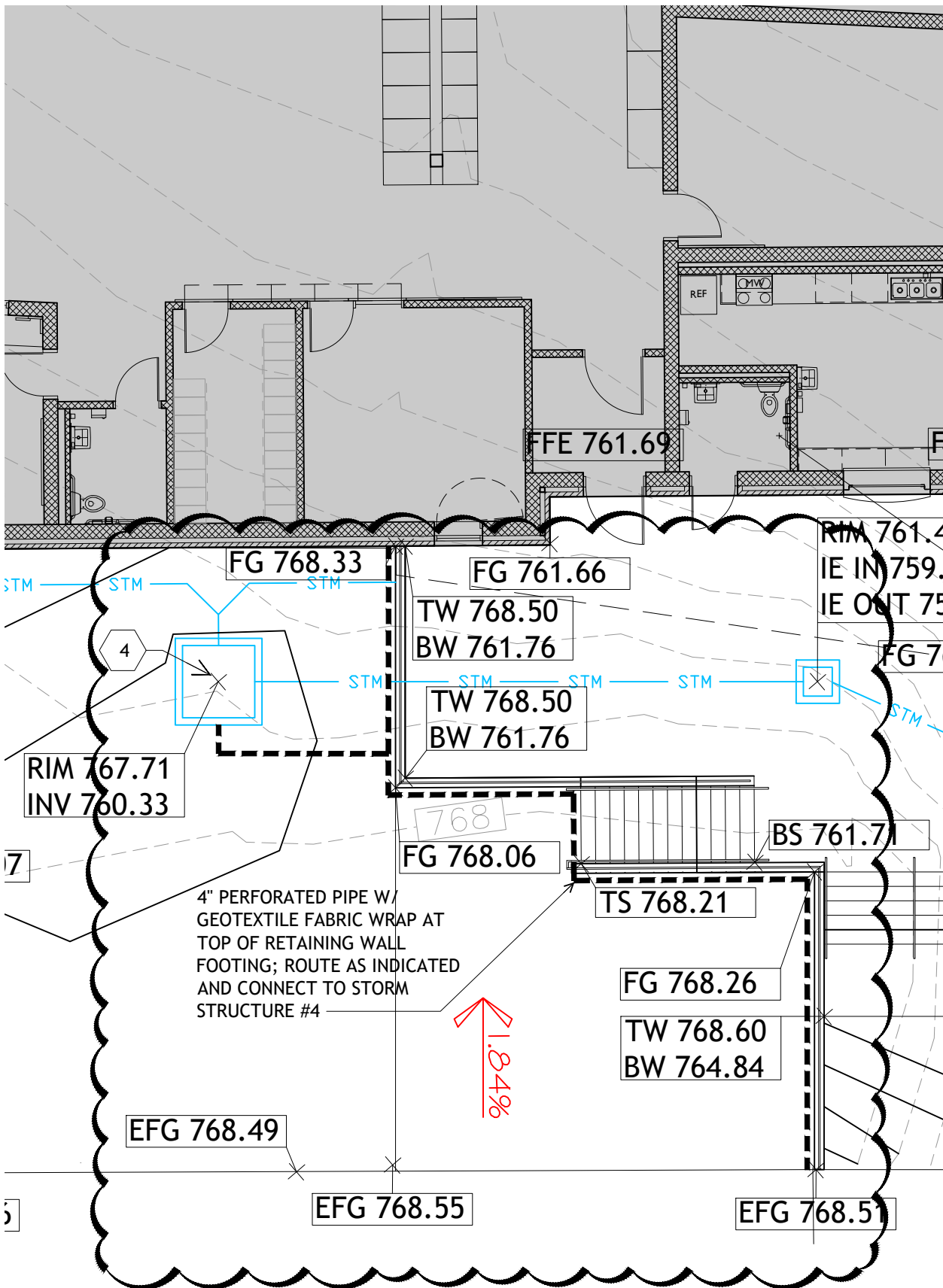
Salem Community Schools - 2021 FEMA Safe Room Additions
Salem High School (Volume 1)
700 N. Harrison Street
Salem, Indiana

Sheet
AD-5e

630 Walnut Street
Jeffersonville, IN 47130
812. 282. 9554
812. 282. 9171 FAX
www.kovertHawkins.com



KovertHawkins
architects



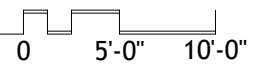
Revisions	Drawn	Checked By	Project No.	Date
1	HG		202020.01	05/03/2021
2		jh		
3				
4				
5				
6				

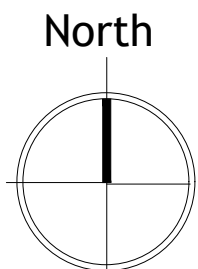
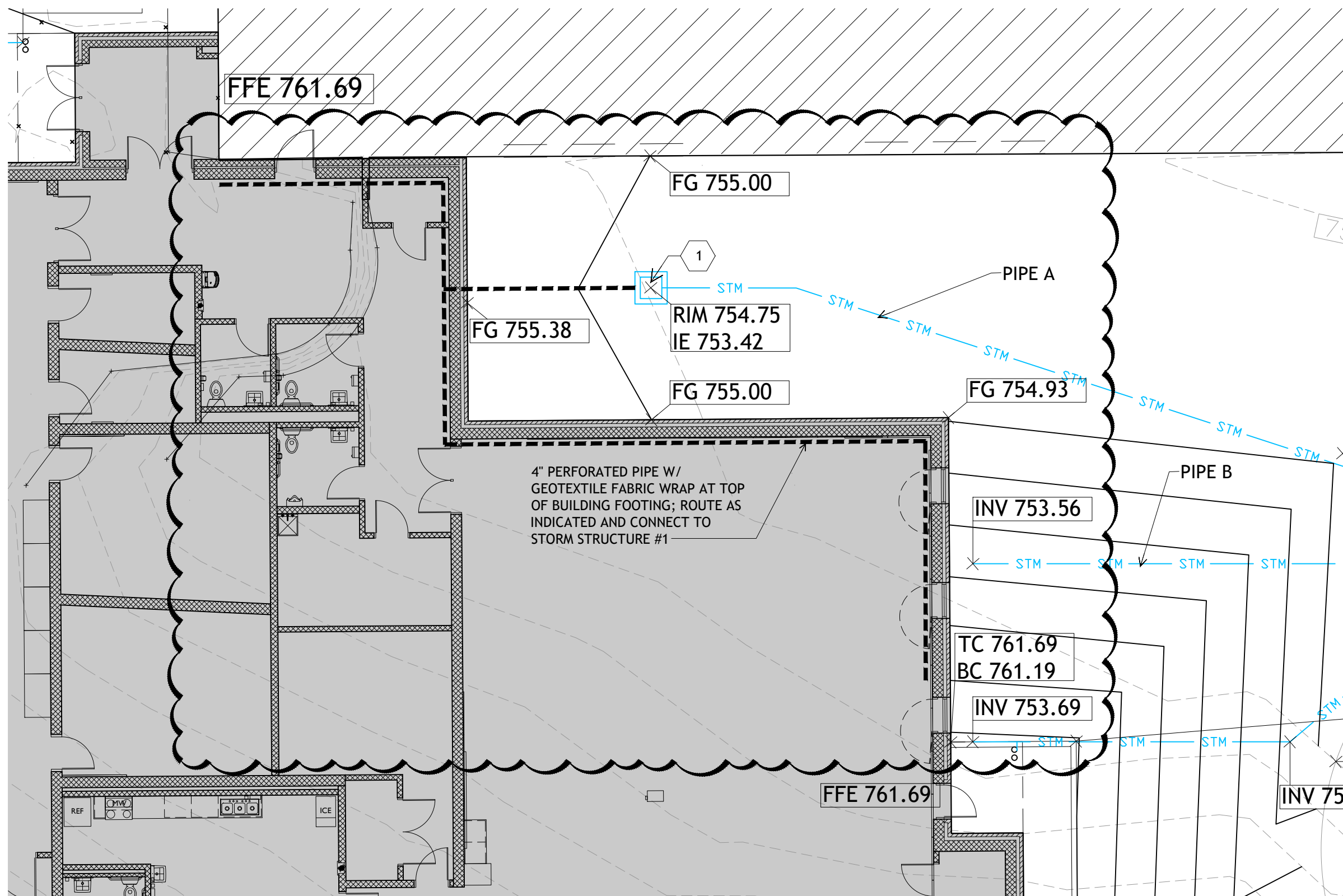
Certified By: *John A. Hawkins*

Salem Community Schools - 2021 FEMA Safe Room Additions
Salem High School (Volume 1)
700 N. Harrison Street
Salem, Indiana

Partial Revised Site Grading Plan

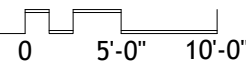
full size plot scale: 1"=10'-0"





Partial Revised Site Grading Plan

full size plot scale: 1"=10'-0"



Drawn	HG
Checked By	jh
Project No.	202020.01
Date	05/03/2021

Revisions	1	2	3	4	5	6

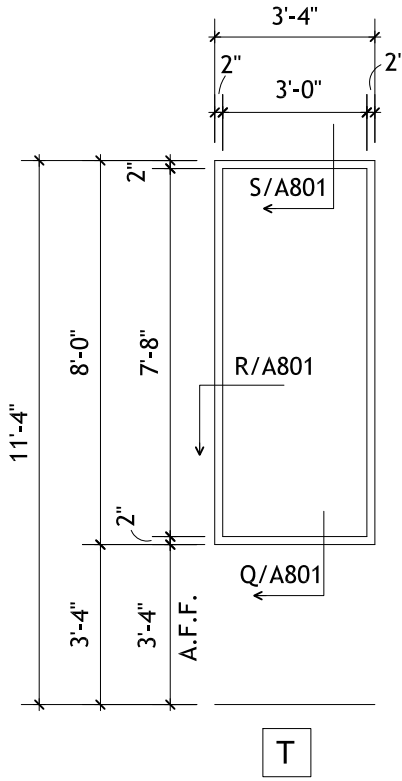
Certified By
John A. Hawkins
Professional Engineer
No. 12345
State of Indiana

630 Walnut Street
Jeffersonville, IN 47130
812. 282. 9554
812. 282. 9171 FAX
www.koverthawkins.com

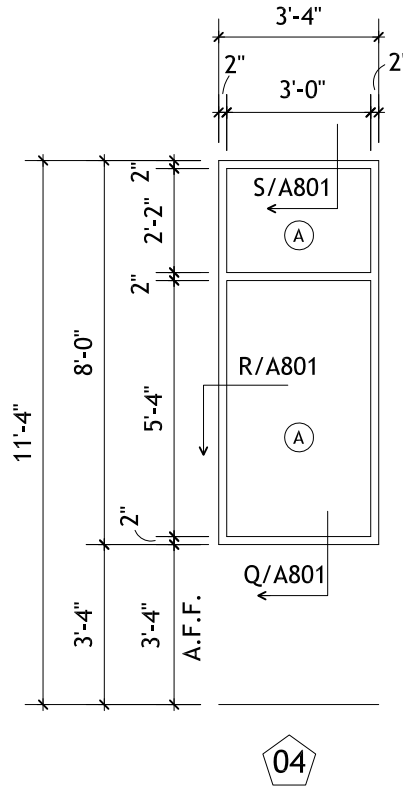


KovertHawkins
architects

Drawn	bb
Checked By	jh
Project No.	Z02020.02
Date	05/03/2021



HOLLOW METAL FRAME ELEVATION
1/4" = 1'-0"

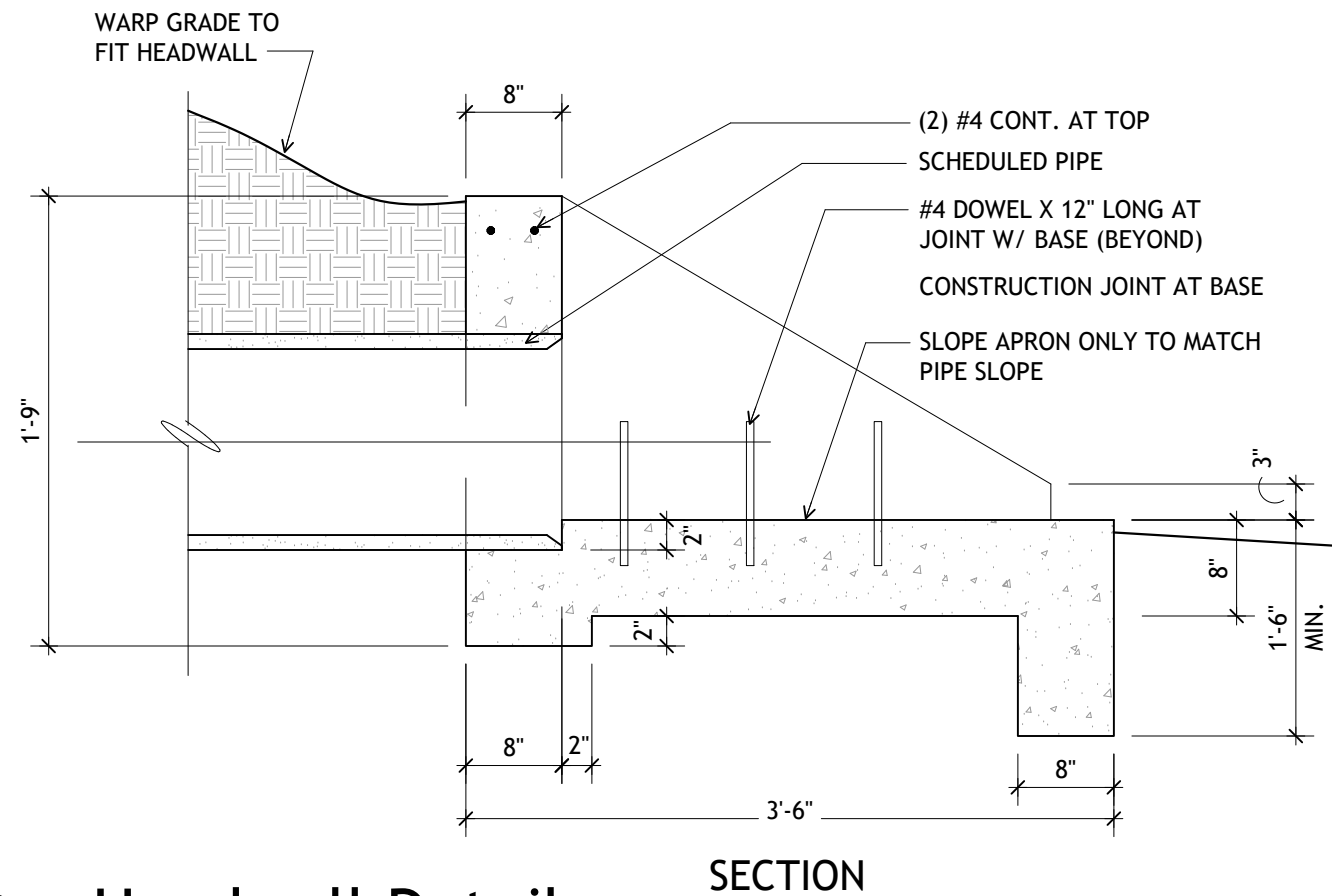
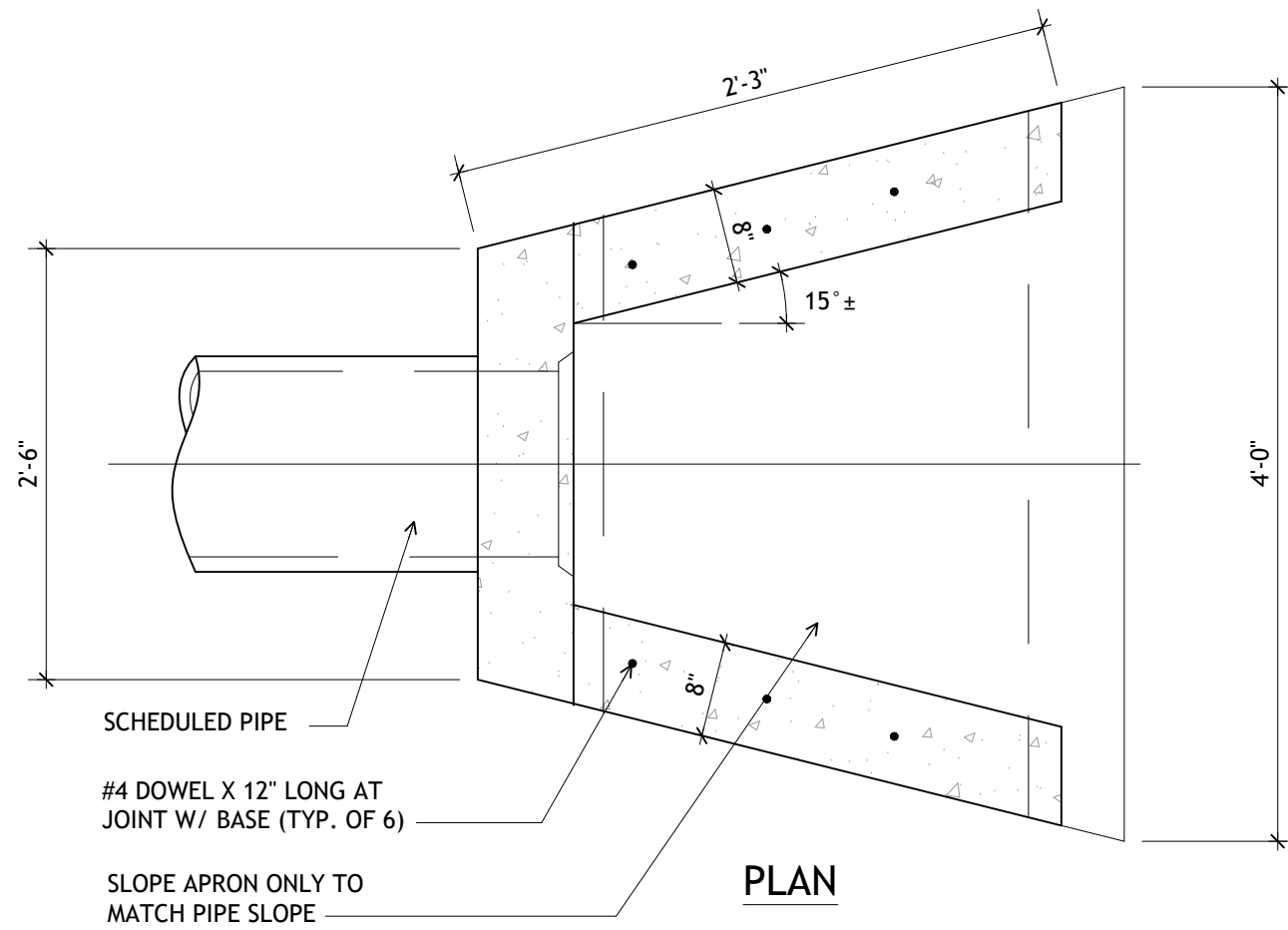


ALUMINUM STOREFRONT FRAME
ELEVATION
1/4" = 1'-0"

Salem Community Schools - 2021 FEMA Safe Room Additions
Salem Middle School (Volume 2)
1000 N. Harrison Street
Salem, Indiana

Sheet

AD-5h



NOTES:

HEADWALL SHALL MEET OR EXCEED THE INDIANA DEPARTMENT OF HIGHWAYS APPLICABLE STANDARD DETAIL OF SLOPED AND FLARED HEADWALLS FOR PIPE.

REINFORCING STEEL TO BE MIN. GRADE 60, EVENLY SPACED.

DIMENSIONS AND QUANTITIES ARE APPROXIMATE, BASED UPON CONCRETE PIPE. ADJUST AS REQUIRED.

1
AD-5i

Headwall Detail

NO SCALE

Drawn	HG
Checked By	jh
Project No.	202020.01
Date	05/03/2021

Revisions	1
	2
	3
	4
	5
	6

Certified By
J. A. Hawkins



ADDENDUM # 5 – MEP

Date: 05/03/2021

Project Name: 2021 Salem MS/HS FEMA Safe Room Addition

STW Project No.: 20108/20109

This addendum supersedes and supplements all portions of Volumes 1 and 2 of the Construction Documents with which it conflicts. Acknowledgement of this Addendum shall be noted on the Form of Proposal.

Addendum #5 makes the following modifications and clarifications to Volumes 1 and 2 of the Construction Drawings and the project Specifications.

VOLUME 1 PLUMBING DRAWINGS

Item 1: Refer to attached Volume 1 revision sketches P101A, P201A, P502A, and P601A

- A. Sink S1A in CONCESSION 121 shall be changed to be a 3-compartment, casework mounted sink as indicated in revised PLUMBING FIXTURE SCHEDULE.
 - a. Sink S1A drain shall be 2" and discharge to floor sink FS1. Route drain line tight to plan North wall, coordinate routing with ice maker and beverage cooler. Slope at 1/4"/foot.
 - b. Coordinate sink installation with casework, refer to architectural plans.
 - c. Provide (2) cold and hot water lines to sink (additional S1A faucet has been added).
- B. Sink S2A has been added.
 - a. Sink S2A shall be wall mounted with the rim at 34". Provide with factory wall mounting bracket per revised PLUMBING FIXTURE SCHEDULE
- C. Floor Drain FD1 has been added in RR113.

VOLUME 2 PLUMBING DRAWINGS

Item 2: Refer to attached Volume 1 revision sketches P101A, P201A, and P502A.

- A. Additional sink S1A shall be added in PREP AREA B103.
 - a. Provide plaster trap for S1A sink that has been added.
 - b. Coordinate sink installation with casework, refer to architectural plans.

MECHANICAL SPECIFICATIONS

Item 3: Refer to specification section 23 09 00.

- A. The following sequence shall be added to section 4.2 E:
 - a. Thermostat Override Control (High School/Volume 1 HP-4 Only)
 - i. BAS shall continuously monitor temperature sensor in ADA RR 122.
 - ii. Override control: user-defined setpoint shall be assigned to BAS temperature sensor. If temperature in ADA RR 122 rises above the setpoint in cooling mode (or below

setpoint in heating mode), HP-4 shall be put into occupied mode operation until setpoint is satisfied.

- iii. Default set points: 75 for cooling mode, 65 for heating mode (adj.). Setpoints shall be required to be outside the HP-4 thermostat setpoint user-adjustable range.

Item 4: Refer to specification section 23 72 23 section 2.1: Acceptable Manufacturers

- A. RENEWAIRE shall be added as an acceptable manufacturer.

Item 5: Refer to specification section 23 21 16

- A. Section 2.1: Acceptable Manufacturers—PATTERSON shall be added as an acceptable manufacturer.
- B. Section 2.2: Acceptable Manufacturers—PATTERSON and SPIROTHERM shall be added as acceptable manufacturers.
- C. Section 2.3: Acceptable Manufacturers—PATTERSON and SPIROTHERM shall be added as acceptable manufacturers.

VOLUME 1 MECHANICAL DRAWINGS

Item 6: Refer to Volume 1 Sheet M101

- A. Refer to GENERAL NOTES
 - a. The following General Note shall be added:
 - i. FLEX DUCT: ALL FLEX DUCT IN BAND ROOM 116 AND CHOIR 101 SHALL BE REQUIRED TO BE THERMAFLEX M-KE ACOUSTICAL FLEXIBLE DUCT OR EQUIVALENT APPROVED BY THE ENGINEER
- B. Refer to PARTIAL FLOOR PLAN – MECHANICAL PIPING
 - a. Refer to ADA RR 122: Add (1) BAS temperature sensor on the plan north wall of the room and add the following keynote:
 - i. 25: PROVIDE WALL MOUNTED BAS TEMPERATURE SENSOR INSTALLED AS HIGH AS POSSIBLE BELOW CEILING LEVEL. SENSOR TO BE CONFIGURED TO HP-4 OVERRIDE CONTROL, REFER TO SPECIFICATION SECTION 230900 FOR DETAILS.

Item 7: Refer to attached Volume 1 revision sketch M101B

- A. Revise HP-5 / CHOIR 101 return ductwork routing as indicated on this sketch.

Item 8: Refer to Volume 1 Sheet M601

- A. Refer to ENERGY RECOVERY VENTILATOR SCHEDULE
 - a. RENEWAIRE shall be added as an acceptable manufacturer.
- B. Refer to EXPANSION TANK SCHEDULE
 - a. PATTERSON shall be added as an acceptable manufacturer

VOLUME 2 MECHANICAL DRAWINGS

Item 9: Refer to Volume 1 Sheet M601

- A. Refer to ENERGY RECOVERY VENTILATOR SCHEDULE
 - a. RENEWAIRE shall be added as an acceptable manufacturer.
- B. Refer to EXPANSION TANK SCHEDULE
 - a. PATTERSON shall be added as an acceptable manufacturer

VOLUME 1 ELECTRICAL DRAWINGS

Item 10: General Note for floor plans

- A. Coordinate locations of all devices adjacent to Tornado Shutters to avoid conflict with shutter clearances. Refer to architectural floor plans and shutter schedule for additional requirements.

Item 11: Refer to Volume 1 Sheet E101

- A. Refer to attached sketch E101b. Add Exit Sign type "X1" above door 114 leading out of Corridor 114.

Item 12: Refer to Volume 1 Sheets E201 and E601

- A. Provide 200A/208V/3Ph/4W fusible disconnect switch fused at 200A on line side of utility power feed to ATS-EN.

Item 13: Refer to Volume 1 Sheet E301.

- A. Refer to revised sketch E301C.
 - a. Provide magnetic door hold opens with extension brackets as required for 90-degree door swing and smoke detectors on each side of door 115b. Coordinate requirements with all trades prior to installation.
 - b. Provide magnetic door hold open with extension bracket as required for 90-degree door swing and smoke detectors on each side of door 114. Coordinate requirements with all trades prior to installation.

VOLUME 2 ELECTRICAL DRAWINGS

Item 14: General Note for floor plans

- A. Coordinate locations of all devices adjacent to Tornado Shutters to avoid conflict with shutter clearances. Refer to architectural floor plans and shutter schedule for additional requirements.

Item 15: Refer to Volume 2 Sheet E201

- A. In Prep Area B103
 - a. Shift type "C,G" duplex at counter as required for new sink location referenced in this addendum under Volume 2 Sheet P101 revisions.
 - b. Shift receptacle shown below window to the south (plan west).

Item 16: Refer to Volume 2 Sheets E201 and E601

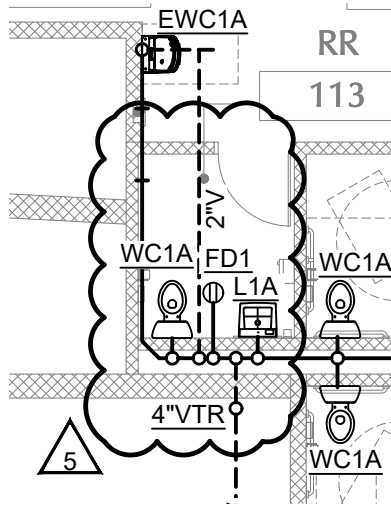
- A. Provide 200A/208V/3Ph/4W fusible disconnect switch fused at 200A on line side of utility power feed to ATS-EN.

END OF ADDENDUM #5

630 Walnut Street
Jeffersonville, IN 47130
812.282.9554
812.282.9171 FAX
www.koverthawkins.com

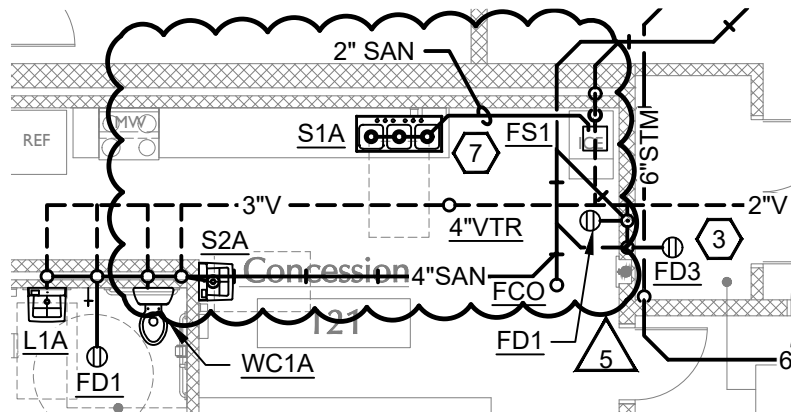
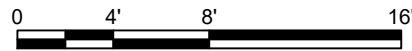


KovertHawkins
architects



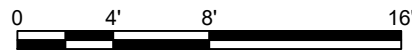
FLOOR PLAN - SANITARY SEWER

SCALE: 1/8"=1'-0"



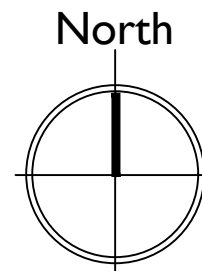
FLOOR PLAN - SANITARY SEWER

SCALE: 1/8"=1'-0"



SHEET KEYNOTES:

7. HOLD 2" SANITARY DRAIN FROM SINK S1A TIGHT TO WALL BEHIND BEVERAGE COOLER. DISCHARGE TO FLOOR SINK FS1 WITH AIR GAP.



Revisions	ADDENDUM #1	ADDENDUM #2	ADDENDUM #3	ADDENDUM #4	ADDENDUM #5	ADDENDUM #6
1	04/05/2021					
2	04/19/2021					
3	04/23/2021					
4	04/27/2021					
5	05/03/2021					
6						

Salem Community Schools - 2021 FEMA Safe Room Additions

Salem High School
(Volume 1)

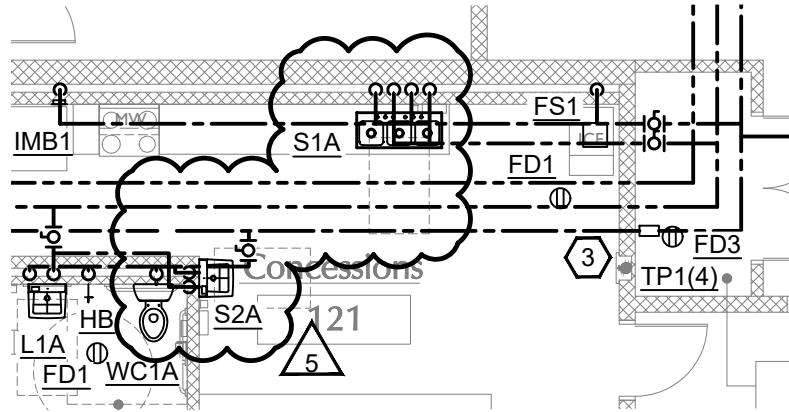
700 N. Harrison Street Salem, Indiana 47167

SCS
Sheet
PI01A

630 Walnut Street
Jeffersonville, IN 47130
812.282.9554
812.282.9171 FAX
www.koverthawkins.com

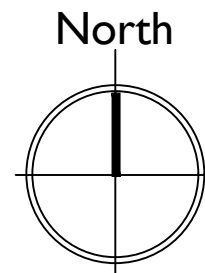


KovertHawkins
architects



FLOOR PLAN - DOMESTIC WATER

SCALE: 1/8"=1'-0"



Revisions	ADDENDUM #1	ADDENDUM #2	ADDENDUM #3	ADDENDUM #4	ADDENDUM #5	Drawn	BMS
1	04/05/2021						
2	04/19/2021						
3	04/23/2021						
4	04/27/2021						
5	05/03/2021						
6							

Checked By: JAT
Project No: 202020.01
Date: 05/03/2021
Certified By:

Salem Community Schools - 2021 FEMA Safe Room Additions

Salem High School
(Volume 1)

700 N. Harrison Street Salem, Indiana 47167

SCS

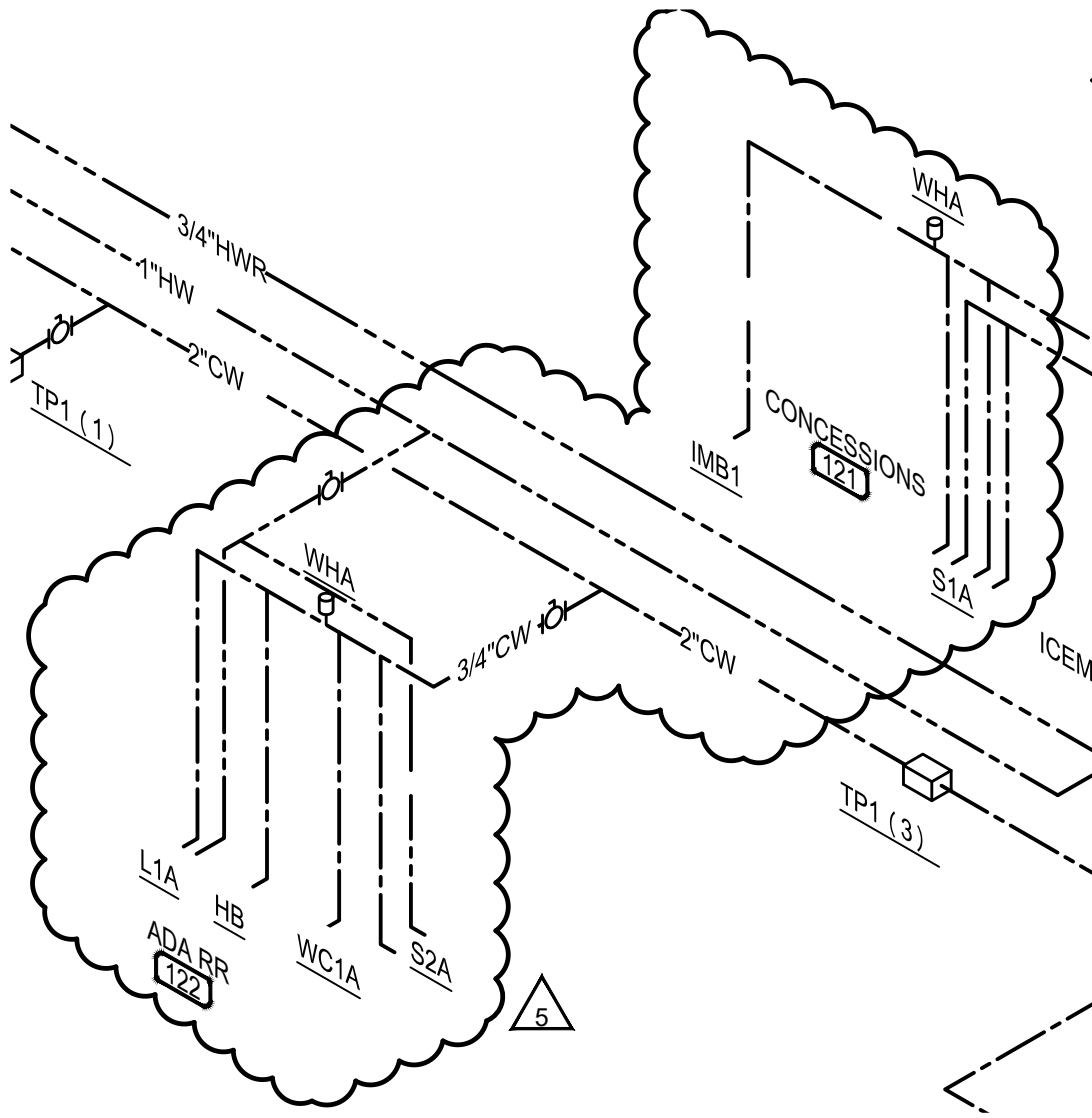
Sheet

P201A

630 Walnut Street
Jeffersonville, IN 47130
812.282.9554
812.282.9171 FAX
www.koverthawkins.com

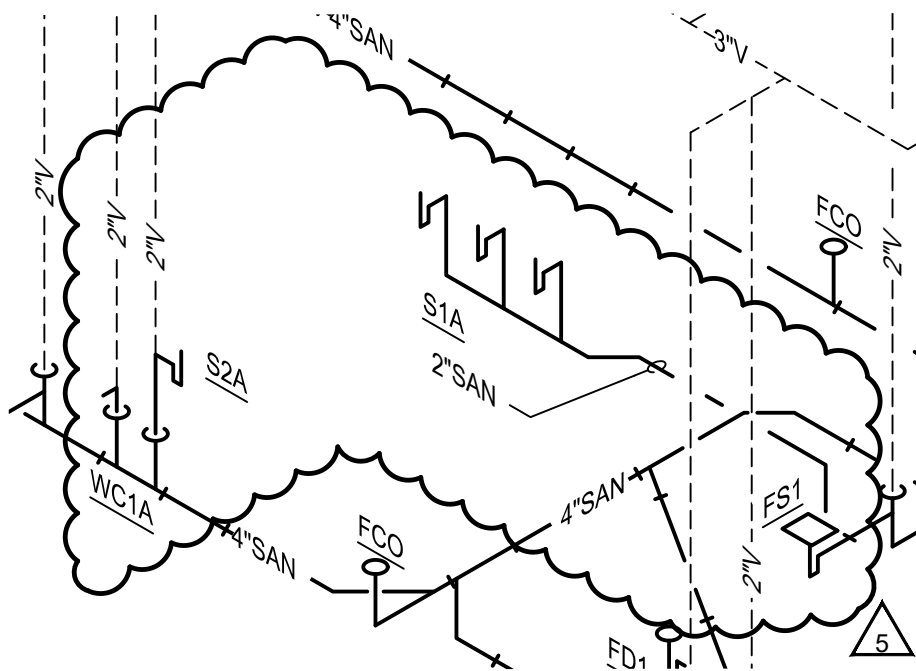


KovertHawkins
architects



DOMESTIC WATER RISER

NOT TO SCALE



SANITARY WASTE RISER

NOT TO SCALE

Revisions	1	04/05/2021	ADDENDUM #1	Drawn	BMS
	2	04/19/2021	ADDENDUM #2	Created By	JAT
	3	04/23/2021	ADDENDUM #3	Project No.	202020.01
	4	04/27/2021	ADDENDUM #4	Date	05/03/2021
	5	05/03/2021	ADDENDUM #5		
	6				

Certified By

Salem Community Schools - 2021 FEMA Safe Room Additions

Salem High School
(Volume 1)

700 N. Harrison Street Salem, Indiana 47167

SCS

Sheet

P502A

PLUMBING FIXTURE SCHEDULE

MARK	MANUFACTURER	MODEL / TYPE	CW	HW	TRAP	WASTE	VENT	MOUNTING	REMARKS	OTHER ACCEPTABLE MANUFACTURERS
<u>WC1A</u>	AMERICAN STANDARD	BOWL: 3447101 WALL-HUNG ELONGATED BOWL TANK: 3882107	1-1/4"	---	INTEGRAL	4"	2"	WALL HUNG: RIM 17"	WALL-HUNG TANK TYPE WATER CLOSET ADA COMPLIANT, ELONGATED BOWL, 1.28GPF, HEAVY DUTY OPEN FRONT SEAT LESS COVER, WITH CARRIER. PROVIDE WITH FACTORY SUPPLY HOSE AND STOP VALVE. <u>MANUAL LEVER TO BE ON OPEN SIDE OF THE FIXTURE PER ADA REQUIREMENTS. REFER TO PLANS.</u>	ZURN, SLOAN, KOHLER, GERBER
<u>U1A</u>	AMERICAN STANDARD	6590.001 URNIAL FLUSH VALVE: AMERICAN STANDARD 6045.101.002	3/4"	---	INTEGRAL	2"	2"	WALL HUNG: U1A - LIP 17"	TOP SPUD, 1.0G, MANUAL FLUSH VALVE, WITH CARRIER	ZURN, SLOAN, KOHLER
<u>L1A</u>	AMERICAN STANDARD	0355.012 ADA LAVATORY FAUCET: AMERICAN STANDARD 7385.003 TRIM: CHROME PLATED GRID DRAIN, LOOSE KEY OPERATED SUPPLY STOPS, ADA COMPLIANT INSULATION WRAP.	1/2"	1/2"	1-1/4"	2"	2"	WALL HUNG: RIM 34"	20-1/2" X 18-1/4", VITREOUS CHINA, 4" CENTERS, BACK AND SIDE SPLASH, HEAVY DUTY CONCEALED ARM CARRIERS, SINGLE HANDLE FAUCET	ZURN, SLOAN, KOHLER, DELTA, T&S
<u>S1A</u>	JUST MANUFACTURING	SINK: TL-ADA-1843-A-GR-18-GA TRIPLE COMPARTMENT SINK FAUCET: ELKAY LK800GN08L2 TWO-HANDLE GOOSENECK FAUCET (QUANTITY 2) TRIM: CHROME PLATED GRID STRAINER, LOOSE KEY OPERATED SUPPLY STOPS.	1/2" (2)	1/2" (2)	---	2" (3)	---	CASEWORK MOUNTED COORDINATE INSTALLATION WITH ARCHITECT AND CASEWORK SELECTION	42-1/4" X 17-1/4" X 6" WITH TRIPLE 12" x 12" COMPARTMENTS, 18-8 STAINLESS STEEL, REAR CENTER DRAINS. TWO-HANDLE FAUCETS WITH AERATORS, 1.5 GPM. PROVIDE (2) FAUCET LOCATIONS WITH (3) FAUCET HOLES 4" OC (8" OUTER HOLES) IN SINK FOR FAUCET INSTALLATION. 2" LEVER HANDLES. ROUTE (1) 2" DRAIN SLOPED AT 1/4" PER FOOT TO FLOOR SINK AND DISCHARGE WITH AIR GAP. COORDINATE DRAIN CONNECTION TYPE AND SIZE WITH FINAL SINK SELECTION	ELKAY, ZURN, SLOAN, KOHLER, MOEN, DELTA, T&S
<u>S2A</u>	REGENCY	SINK: 600HS172H WALL MOUNTED SINK FAUCET: REGENCY 600FW48GWHL GOOSENECK FAUCET W/ WRIST BLADE HANDLES TRIM: CHROME PLATED GRID STRAINER, LOOSE KEY OPERATED SUPPLY STOPS	1/2"	1/2"	1-1/4"	2"	2"	WALL HUNG: RIM 34"	17" x 15" x 5-1/2" 20 GA 304 STAINLESS STEEL, CENTER DRAIN, 8" BACKSPLASH. PROVIDE WITH FACTORY WALL BRACKET AND ALL REQUIRED MOUNTING FASTENERS. TWO-HANDLE WRIST BLADE FAUCET WITH AERATOR, 2.0 GPM. TWO FAUCET HOLES AT 4" OC. PROVIDE LAV-GUARD OR SIMILAR ON EXPOSED DRAIN AND SUPPLY PIPING	ELKAY, ZURN, SLOAN, KOHLER, MOEN, DELTA, T&S

5

630 Walnut Street
Jeffersonville, IN 47130
812.282.9554
812.282.9171 FAX
www.koverthawkins.com

Revisions

1	04/05/2021	ADDENDUM #1
2	04/19/2021	ADDENDUM #2
3	04/23/2021	ADDENDUM #3
4	04/27/2021	ADDENDUM #4
5	05/03/2021	ADDENDUM #5

Drawn: BMS
Created By: JAT
Project No: 202020.01
Date: 05/03/2021

Salem Community Schools - 2021 FEMA Safe Room Additions
Salem High School (Volume 1)
700 N. Harrison Street Salem, Indiana 47167

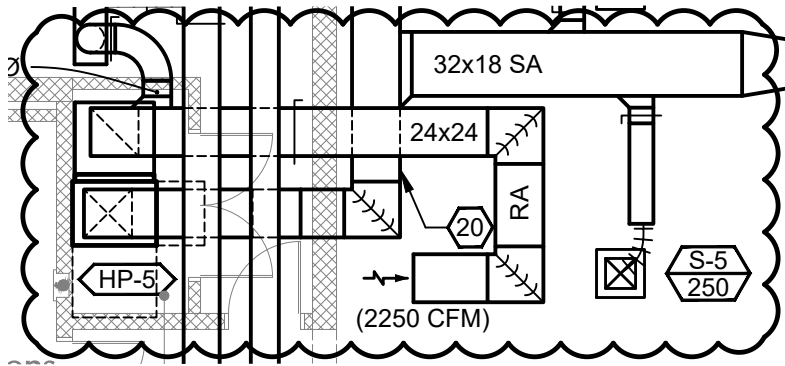
SCS
Sheet

P601A

630 Walnut Street
Jeffersonville, IN 47130
812. 282. 9554
812. 282. 9171 FAX
www.koverthawkins.com



KovertHawkins
architects

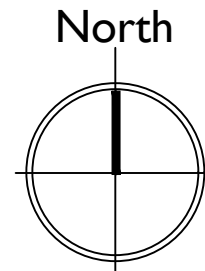


Revisions	1	2	3	4	5	6
	04/05/2021	04/19/2021	04/23/2021	04/27/2021	05/03/2021	
	ADDENDUM #1	ADDENDUM #2	ADDENDUM #3	ADDENDUM #4	ADDENDUM #5	
Drawn	BMS					
Checked By	JAT					
Project No.	202020-01					
Date	05/03/2021					

Certified By _____

FLOOR PLAN - AIR DISTRIBUTION NEW WORK

SCALE: 1/8"=1'-0"



Salem Community Schools - 2021 FEMA Safe Room Additions

Salem High School
(Volume 1)

700 N. Harrison Street Salem, Indiana 47167

SCS

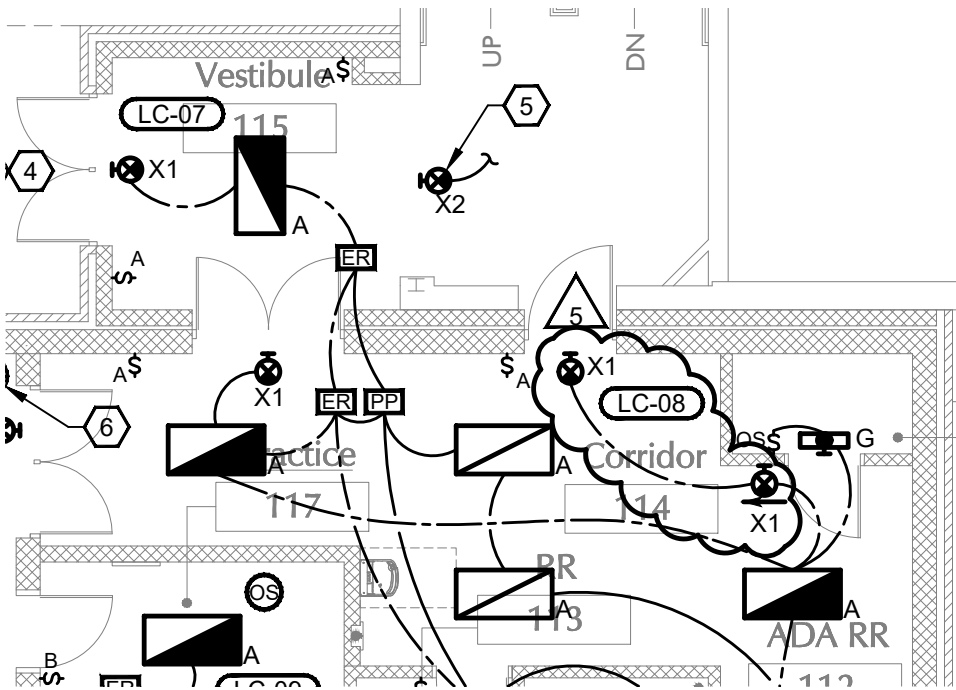
Sheet

M101B

630 Walnut Street
Jeffersonville, IN 47130
812. 282. 9554
812. 282. 9171 FAX
www.koverthawkins.com

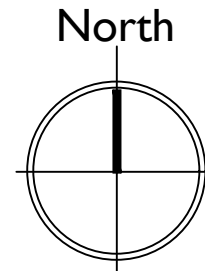
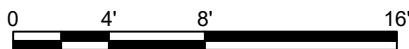


Drawn	ZSD
Checked By	WCC
Project No.	202020-01
Date	05/03/2021
Revisions	1 04/05/2021 ADDENDUM #1 2 04/19/2021 ADDENDUM #2 3 04/23/2021 ADDENDUM #3 4 04/27/2021 ADDENDUM #4 5 05/03/2021 ADDENDUM #5 6
Certified By	



FLOOR PLAN - LIGHTING

SCALE: 1/8"=1'-0"



Salem Community Schools - 2021 FEMA Safe Room Additions

Salem High School
(Volume 1)

700 N. Harrison Street Salem, Indiana 47167

SCS

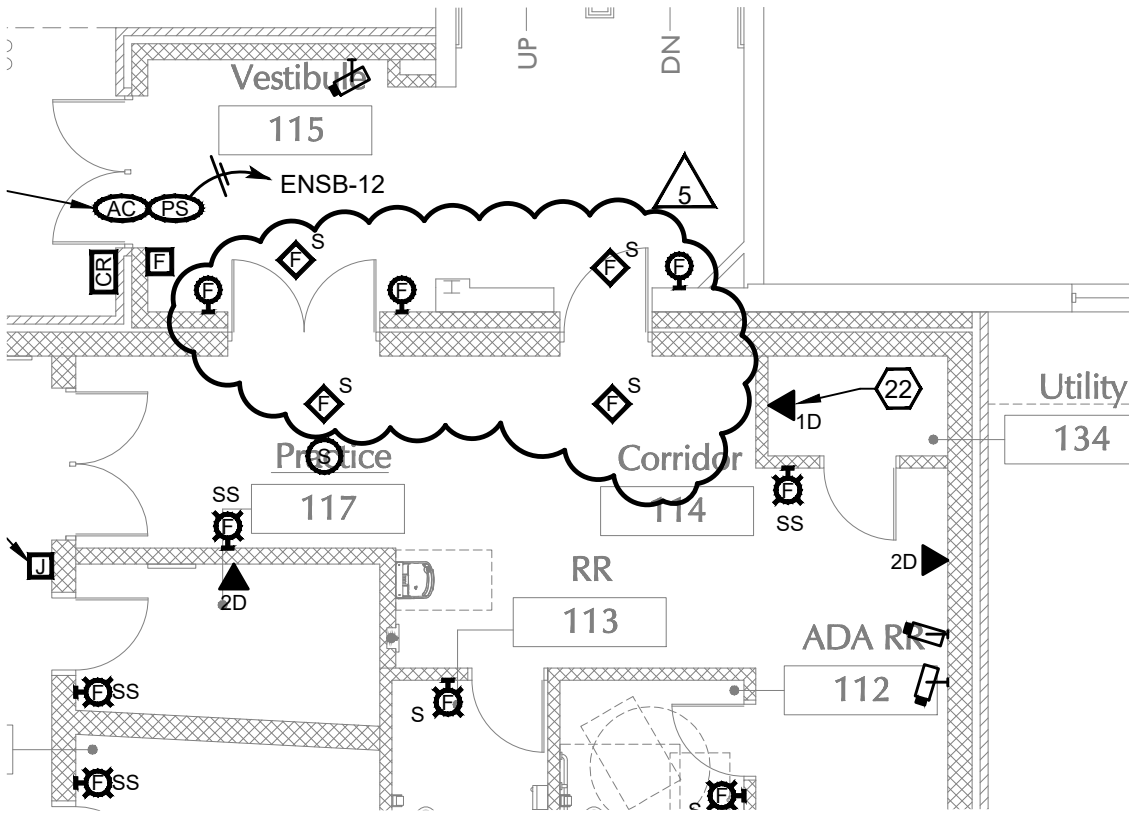
Sheet

E101B

630 Walnut Street
Jeffersonville, IN 47130
812. 282. 9554
812. 282. 9171 FAX
www.koverthawkins.com

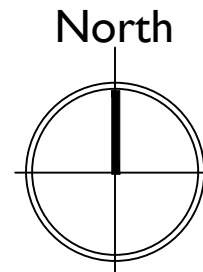
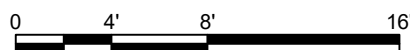


KovertHawkins
architects



FLOOR PLAN - SYSTEMS

SCALE: 1/8"=1'-0"



Drawn	ZSD																		
Checked By	WCC																		
Project No.	202020-01																		
Date	05/03/2021																		
Revisions	<table border="1"> <tr> <td>1</td> <td>04/05/2021</td> <td>ADDENDUM #1</td> </tr> <tr> <td>2</td> <td>04/19/2021</td> <td>ADDENDUM #2</td> </tr> <tr> <td>3</td> <td>04/23/2021</td> <td>ADDENDUM #3</td> </tr> <tr> <td>4</td> <td>04/27/2021</td> <td>ADDENDUM #4</td> </tr> <tr> <td>5</td> <td>05/03/2021</td> <td>ADDENDUM #5</td> </tr> <tr> <td>6</td> <td></td> <td></td> </tr> </table>	1	04/05/2021	ADDENDUM #1	2	04/19/2021	ADDENDUM #2	3	04/23/2021	ADDENDUM #3	4	04/27/2021	ADDENDUM #4	5	05/03/2021	ADDENDUM #5	6		
1	04/05/2021	ADDENDUM #1																	
2	04/19/2021	ADDENDUM #2																	
3	04/23/2021	ADDENDUM #3																	
4	04/27/2021	ADDENDUM #4																	
5	05/03/2021	ADDENDUM #5																	
6																			
Certified By																			

Salem Community Schools - 2021 FEMA Safe Room Additions

Salem High School
(Volume 1)

700 N. Harrison Street Salem, Indiana 47167

SCS

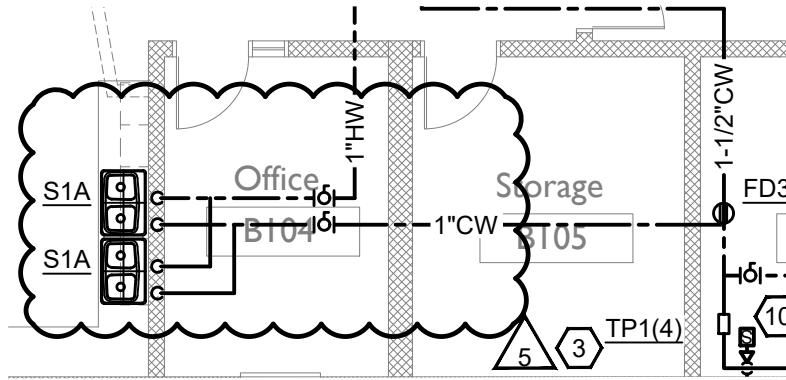
Sheet

E301C

630 Walnut Street
Jeffersonville, IN 47130
812. 282. 9554
812. 282. 9171 FAX
www.koverthawkins.com



KovertHawkins
architects

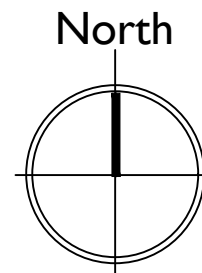


Revisions	1	2	3	4	5	6
	04/05/2021	04/19/2021	04/23/2021	04/27/2021	05/03/2021	
	ADDENDUM #1	ADDENDUM #2	ADDENDUM #3	ADDENDUM #4	ADDENDUM #5	
Drawn	BMS					
Checked By	JAT					
Project No.	202020.02					
Date	05/03/2021					

Certified By

FLOOR PLAN - DOMESTIC WATER

SCALE: 1/8"=1'-0"



Salem Community Schools - 2021 FEMA Safe Room Additions

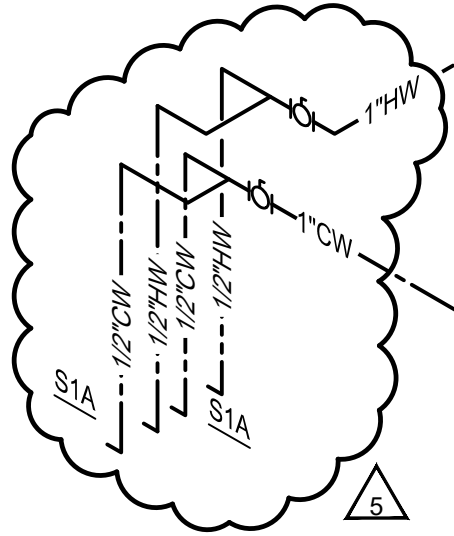
Salem Middle School
(Volume 2)

1001 N. Harrison Street Salem, Indiana 47167

SCS

Sheet

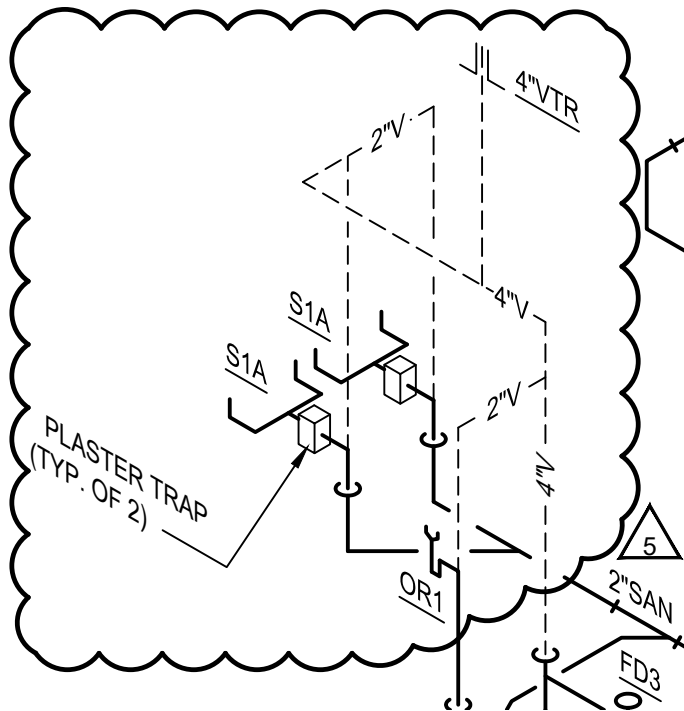
P201A



1

DOMESTIC WATER RISER

NOT TO SCALE



2

SANITARY WASTE RISER

NOT TO SCALE

630 Walnut Street
Jeffersonville, IN 47130
812. 282. 9554
812. 282. 9171 FAX
www.koverthawkins.com



KovertHawkins
architects

Revisions	1	04/05/2021	ADDENDUM #1	BS
	2	04/19/2021	ADDENDUM #2	Drawn
	3	04/23/2021	ADDENDUM #3	Checked By JT
	4	04/27/2021	ADDENDUM #4	Project No. 202020L04
	5	05/03/2021	ADDENDUM #5	Date 05/03/2021
	6			Certified By

SALEM COMMUNITY SCHOOLS - 2021 FEMA Safe Room Additions

Salem Middle School
(Volume 2)

1001 N. Harrison Street Salem, Indiana 47167

SCS

Sheet

P502B