

North Lawrence Community Schools

Gymnasium Floor Renovation

School Board of Trustees

Larry Arnold	President
Kirsten Collier	Vice President
Beth Ritter	Secretary
Tracy Bailey	Member
Scott Gillespie	Member
Gary Holmes	Member
Donnie Branham	Member

Administration

Gary D. Conner	Superintendent
Corbin Dietrich	Director of Business Services
Steve Ritter	Director of Facilities
Darren Waggoner	Director of Transportation

Drawing Index

Parkview Intermediate

(PV-Int) I-101
(PV-Int) Q-301

Gymnasium Floor Plans
Court Striping Layout



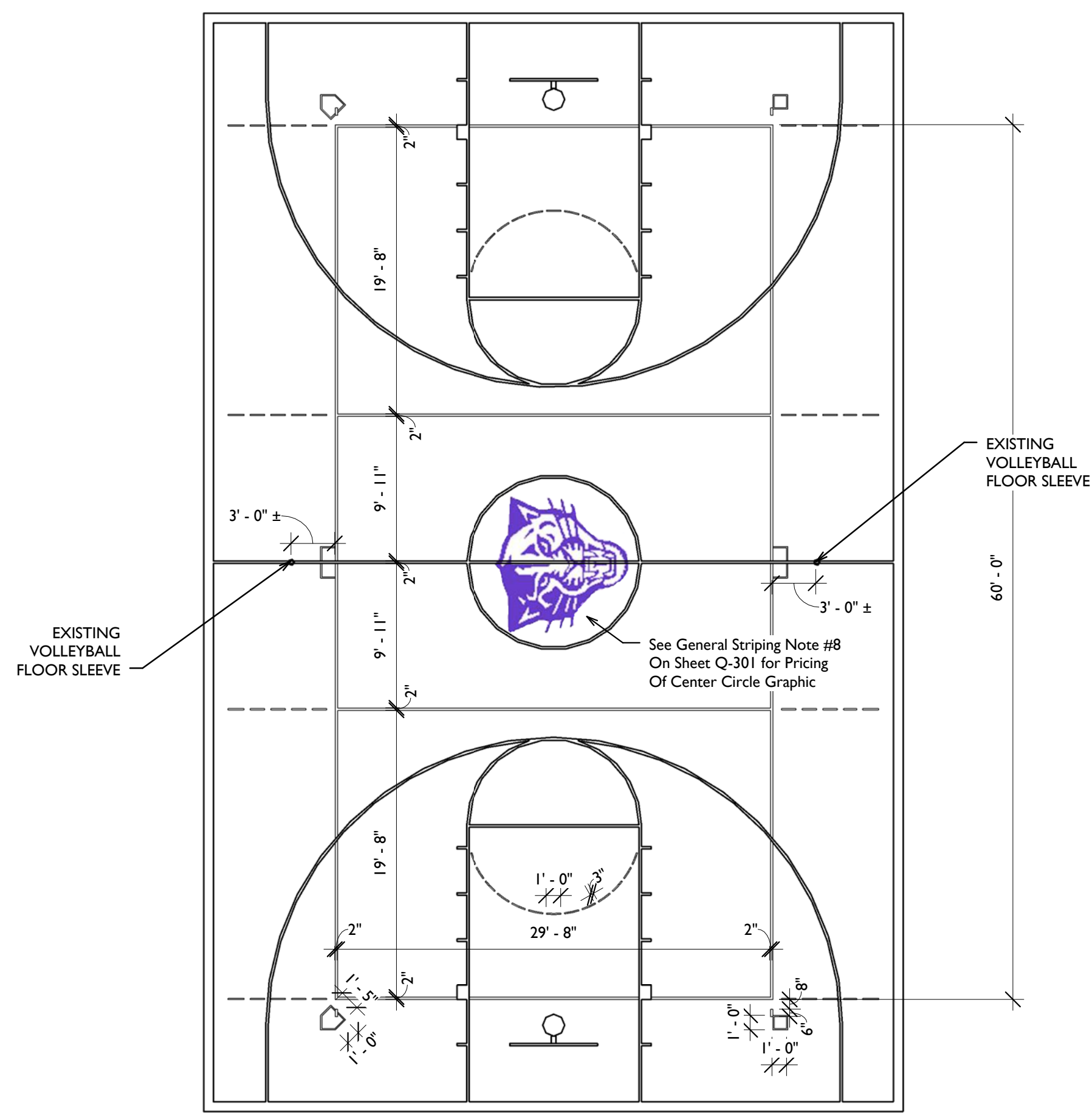
KovertHawkins
architects

630 Walnut Street - Jeffersonville, Indiana 47130 - (812) 282-9554

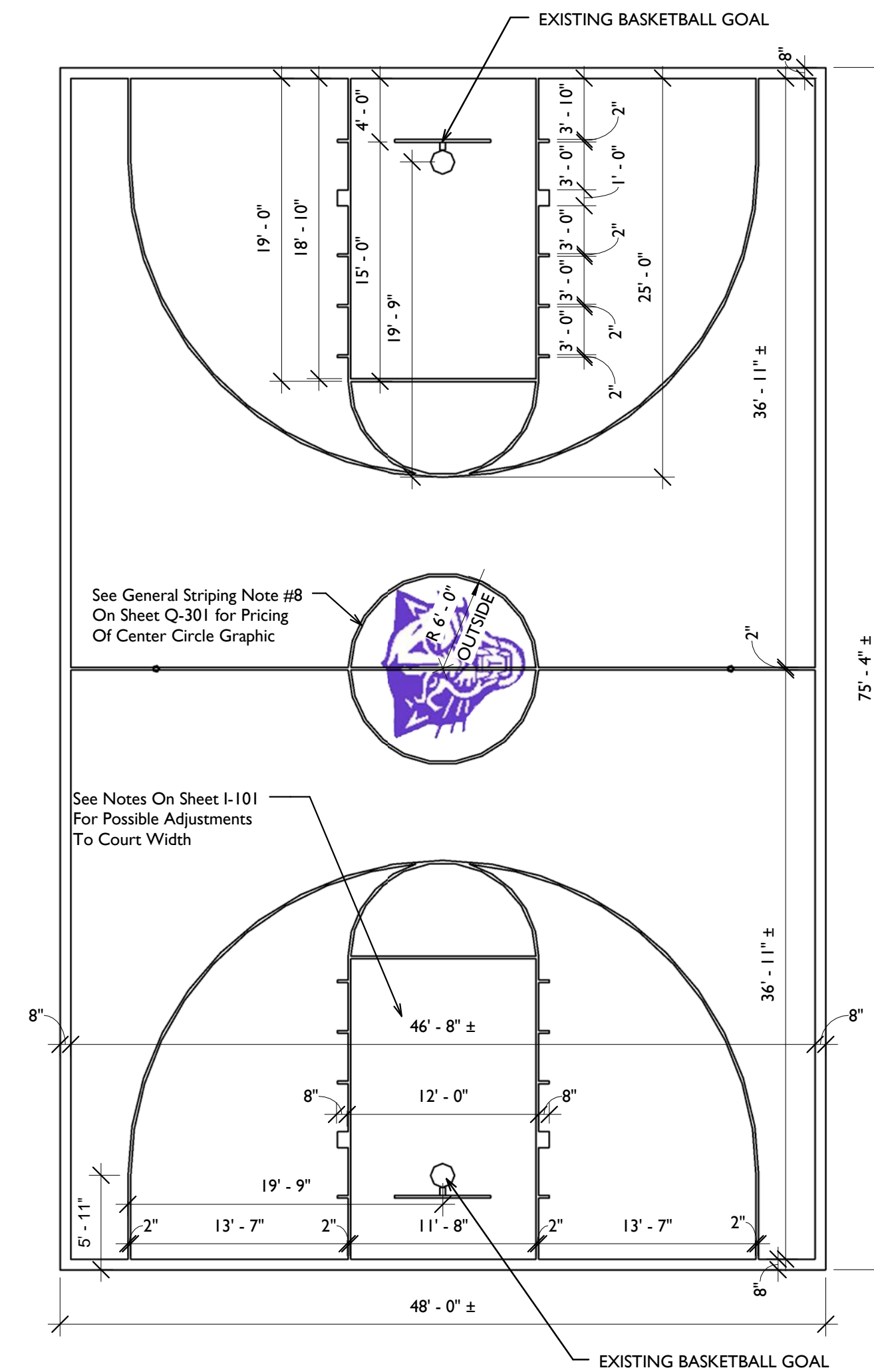


KovertHawkins
architects

North Lawrence Community Schools
Gymnasium Floor Renovation
KHA Project #: 1616.04



2 Typical Basketball / Volleyball / Kickball Court Layout
1/8" = 1'-0"



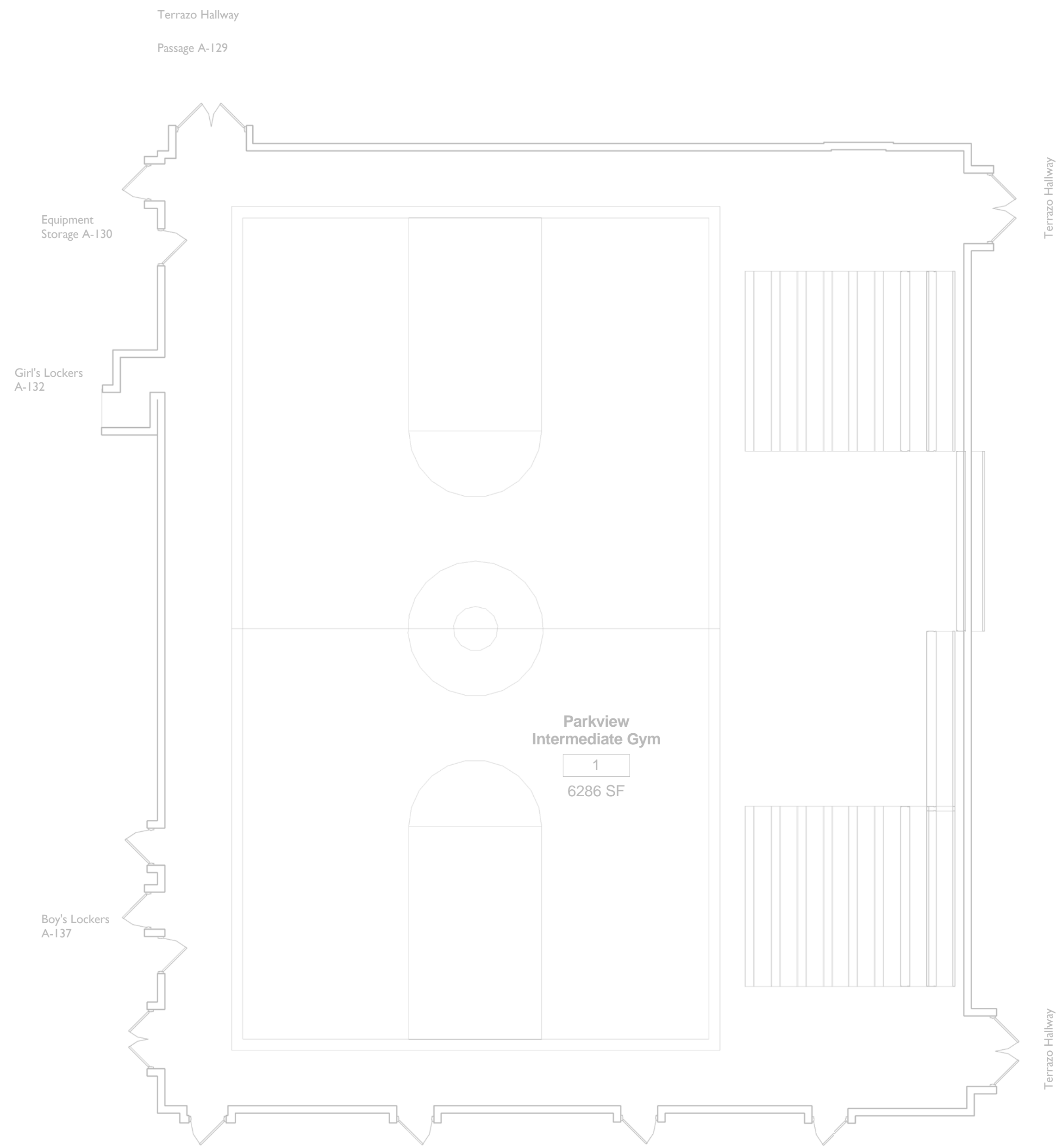
3 Typical Basketball Court Layout
1/8" = 1'-0"

General Court Striping Notes

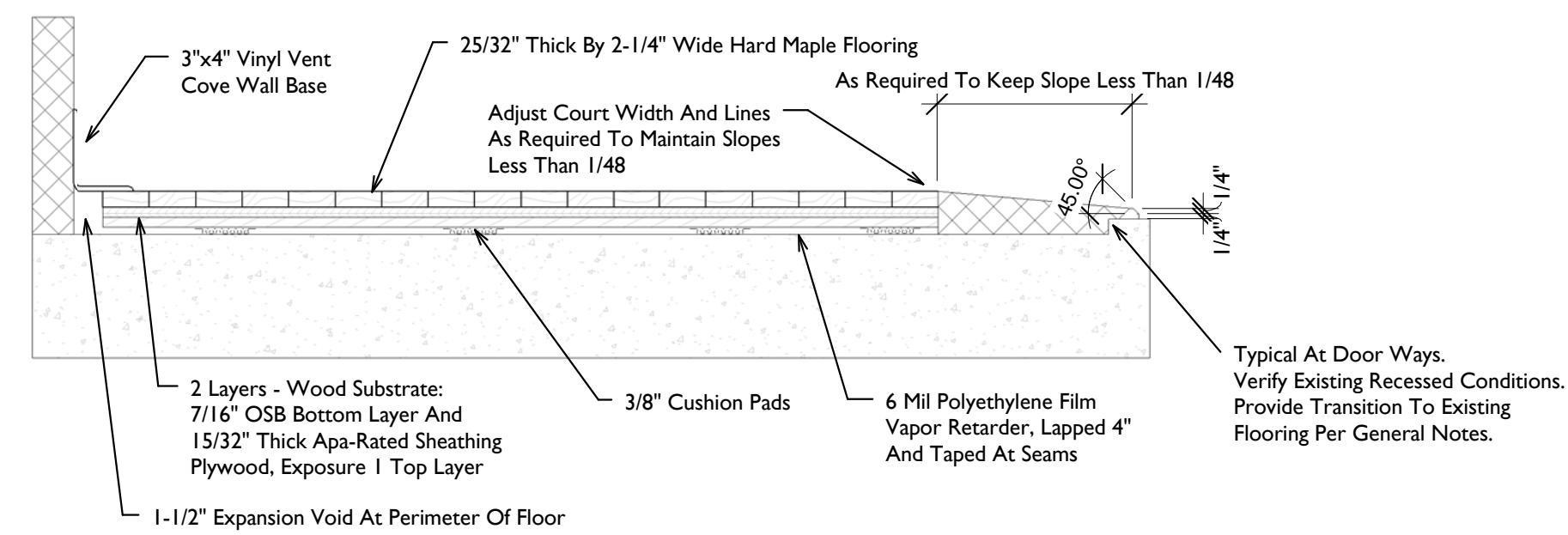
1. ALL MEASUREMENTS ARE TO BE BASED ON CENTERLINE OF EXISTING BASKETBALL GOALS. MEASUREMENTS NOTED WITH "±" ARE TO BE FIELD VERIFIED AND ADJUSTED TO ACTUAL CONDITIONS. ALL OTHER MEASUREMENTS WILL BE HELD AS NOTED.
2. ALL COURT FIELD AND STRIPING COLORS TO BE SELECTED BY ARCHITECT FROM ENTIRE MANUFACTURER'S SELECTION.
3. MULTIPLE COURT STRIPING COLORS WILL BE SELECTED. DIFFERING COLOR SELECTIONS WILL BE CHOSEN FOR EACH SCHOOL.
4. COURT STRIPING COLOR SEPARATION TO BE AS FOLLOWS:
-COLOR #1: BASKETBALL COURT
-COLOR #2: VOLLEYBALL COURT
-COLOR #3: KICKBALL COURT AND MISC' LINES (1" WIDE)
5. THICKNESS OF ALL GAME LINES TO BE 2" WIDE, UNLESS NOTED OTHERWISE.
6. CENTER COURT LINE OF THE VOLLEYBALL COURT TO BE SHARED WITH, AND THE SAME COLOR AS, THE BASKETBALL COURT.
7. PRECEDENCE FOR OVERLAPPING STRIPING COLORS IS BE GIVEN TO COLOR # 1 BASKETBALL COURT.
8. SEE EQUIPMENT PLANS FOR CLARITY OF EQUIPMENT SHOWN OR INDICATED ON THE COURT STRIPING PLANS.
9. ARCHITECT WILL PROVIDE LAYOUT AND FILE FOR CENTER CIRCLE GRAPHIC. A DIFFERENT GRAPHIC WILL BE CREATED FOR EACH SCHOOL.

Notice

The Architect/Engineer does not define the scope of individual trades, subcontractors, material suppliers, or vendors. Any sheet numbering system used which identifies disciplines is solely for the Architect/Engineer's convenience, and is not intended to define a subcontractor's scope of work. Information regarding individual trades, subcontractors, material suppliers, and vendors may be detailed, described and indicated at different locations throughout these documents. No consideration will be given to requests for change orders for failure to obtain and review the complete set of drawings and specifications when preparing bids, prices, and quotations.



Existing Gymnasium Floor Plan
1/8" = 1'-0"

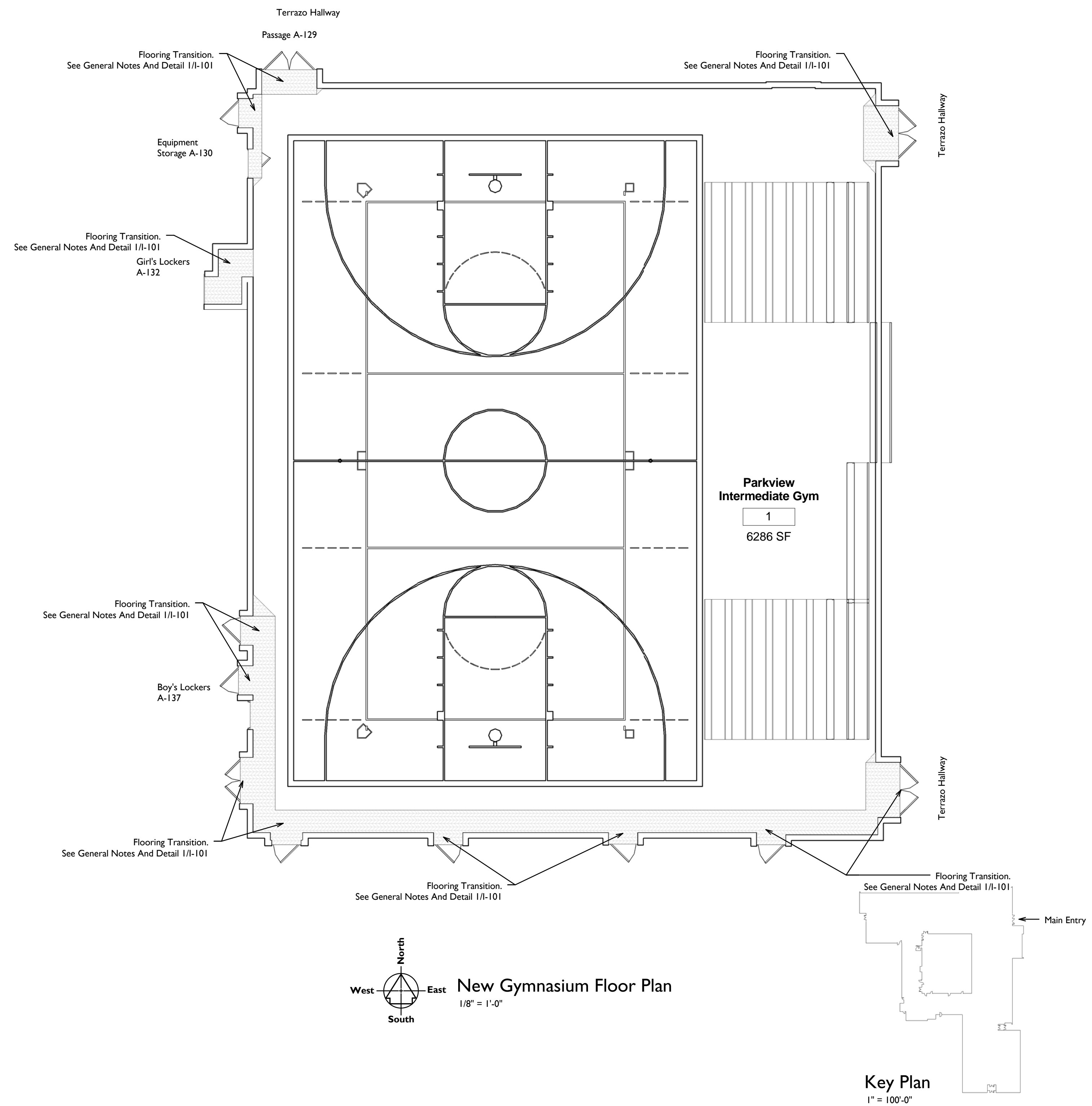


Wood Floor Detail
1 1/2" = 1'-0"

Notice
The Architect/Engineer does not define the scope of individual trades, subcontractors, material suppliers, or vendors. Any sheet numbering system used which identifies disciplines is solely for the Architect/Engineer's convenience, and is not intended to define a subcontractor's scope of work. Information regarding individual trades, subcontractors, material suppliers, and vendors may be detailed, described and indicated at different locations throughout these documents. No consideration will be given to requests for change orders for failure to obtain and review the complete set of drawings and specifications when preparing bids, prices, and quotations.

General Notes:

- Remove Existing Poured Urethane Sports Floor.
- See Specifications For Heavy Metals Evaluation Test Results. Although The Results Indicate What Appears To Be Acceptable Levels, It Is The Contractors Responsibility To Determine The Proper Methods and Procedures To Remove And Dispose Of This Material.
- Remove Existing Rubber And Vinyl Base And Replace With System's New Vented Base. Colors To Be Selected By Architect.
- Install New 25/32" x 2-1/4" Wide Hard Maple Flooring Over New 2 Layers - Wood Substrate (7/16" OSB Bottom Layer And 15/32" Thick Apa-Rated Sheathing Plywood, Exposure 1 Top Layer) Over New 3/8" Foam Cushions Over New 6 Mil Polyethylene Film.
- Remove And Re-Install Manual Operated Bleachers As Required For Installation Of New Floor Surface. Clean And Sand Smooth Bleacher Rollers Wheels To Prevent Scarring Of The New Surface.
- Adjust Height Of Existing Basketball Goals To 10'-0" Above New Floor Surface.
- Grind Concrete Substrate At Doorways, Entrances, And Exits To Create Smooth Transitions From New Floor Surface To Existing Flooring.
- Install Flooring That Transitions To Existing Floor Surfaces Scheduled To Remain Contain No More Slope Than 1/48. See Detail I/I-101.



New Gymnasium Floor Plan
1/8" = 1'-0"

Key Plan
1" = 100'-0"

© COPYRIGHT by Kovert-Hawkins
ALL RIGHTS RESERVED

630 Walnut Street
Jeffersonville, IN 47130
812.282.9154
812.282.9171
www.kovert-hawkins.com

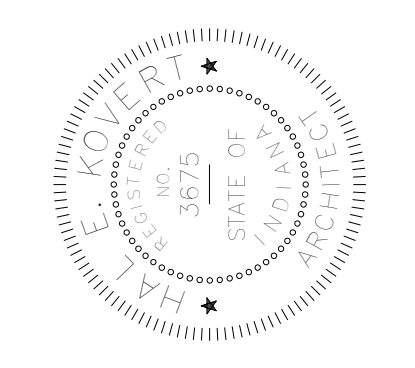


Kovert-Hawkins
architects

Drawn By: KRP
Checked By: HK
Project: 1616.04
Date: 2016-02-29

Revisions

Certified By: *[Signature]*



Gymnasium Floor Renovation
Parkview Intermediate
2024 16th Street
Bedford, Indiana 47421
N 38° 51.620' W 086° 29.975'

Sheet
(PV-Int)
I-101
Gymnasium Floor Renovation