

Symbol Legend

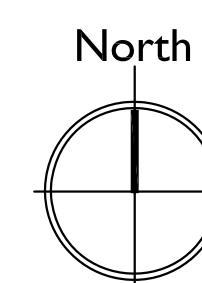
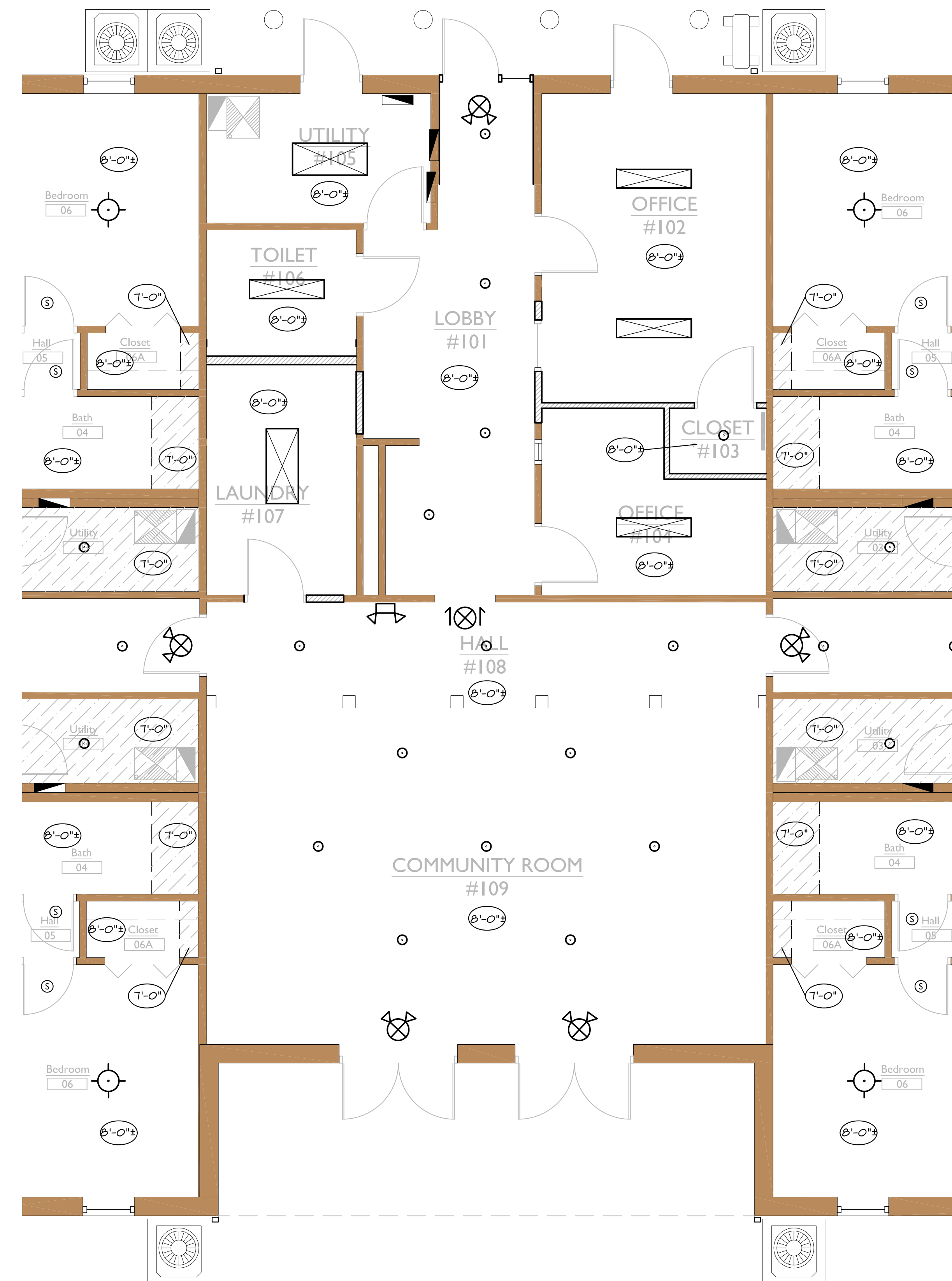
- XXX DOOR IDENTIFICATION—
(SEE DOOR SCHEDULE ON SHEET A-801)
- X PLAN KEYNOTE—
SEE NOTES INDICATED ON EACH SHEET
- X WINDOW IDENTIFICATION—
(SEE ELEVATIONS ON SHEET A-803)
- ◇ PARTITION WALL TYPE—
(SEE DETAILS ON SHEET A-901)
- X X-XX ENLARGED PLAN MARKER—
ABOVE — DETAIL NUMBER
BELOW — SHEET REFERENCE
- X AXXX BUILDING SECTION CUT MARKER—
ABOVE — DETAIL NUMBER
BELOW — SHEET REFERENCE
- X AXXX WALL SECTION CUT MARKER—
ABOVE — DETAIL NUMBER
BELOW — SHEET REFERENCE
- X XXX ELEVATION MARKER—
ABOVE — DETAIL NUMBER
BELOW — SHEET REFERENCE
- XXXXXXXX ROOM IDENTIFICATION—
ABOVE — ROOM NAME
BELOW — ROOM NUMBER
- XXX DRAWING REVISION
(SEE TITLE BLOCK FOR DATES)
- 1 BUILDING LINE
- 2 COLUMN CENTERLINE
- EXISTING WALL TO REMAIN
- EXISTING COMPONENT TO BE REMOVED IN ITS ENTIRETY. SEE NOTES FOR CLARIFICATION
- EXISTING COMPONENT TO REMAIN. PROTECT AS REQUIRED.
- EXISTING ELECTRICAL PANEL / LOAD CENTER TO REMAIN
- EXISTING ELECTRICAL PLUMBING FIXTURE TO REMAIN
- EXISTING DUCTWORK TO REMAIN
- EXISTING ROOF LINE

General Plan Notes

1. UNLESS OTHERWISE NOTED, ALL INTERIOR PARTITIONS ARE 2X WOOD STUDS OF METAL STUDS AT 16" O.C. (SEE PLAN FOR SIZE), WITH 5/8" GYP. BOARD EACH SIDE. ALL CORRIDOR WALLS AND TENANT DEMISING WALLS TO BE 1-HOUR RATED (5/8" TYPE "X" GYP. BOARD). SEAL ALL PENETRATIONS WITH FIRE CAULKING.
2. INTERIOR STUD WALLS ARE DIMENSIONED TO FACE OF STUD. EXTERIOR STUD WALLS ARE DIMENSIONED TO FACE OF STUD ON INTERIOR FACE AND FACE OF BRICK AT EXTERIOR FACE. EXISTING WALLS ARE DIMENSIONED TO FACE OF WALL.
3. ALL CORRIDOR STUD WALLS TO HAVE 3-1/2" FIBERGLASS SOUND BLANKETS TO CEILING HEIGHT. PROVIDE FOAM GASKET UNDER ALL BOTTOM PLATES. PROVIDE CONTINUOUS BEAD OF SEALANT ON BOTH SIDES OF BOTTOM PLATE BETWEEN BOTTOM OF GYP. BOARD AND FLOOR SLAB.
4. MAINTAIN EXISTING ATTIC DRAFT-STOPPING. SEAL ALL PENETRATIONS AT DRAFTSTOPPING.
5. ALL WOOD STUD WALLS SHALL HAVE FIRE-BLOCKING AT TOP OF CEILING HEIGHT.
6. ALL APARTMENT TOILET ROOMS TO HAVE BLOCKING IN WALLS AT WATER CLOSET AND SHOWER FOR GRAB BARS AND SHOWER SEATS. INSTALL BLOCKING IN WALLS FOR ALL TOILET ACCESSORIES.
7. ALL FURNITURE IS SHOWN FOR REFERENCE ONLY.
8. SEE 'Q' SERIES DRAWINGS FOR CASEWORK DETAILS AND CLOSET SHELVEING.
9. SEE 'Q' SERIES DRAWINGS FOR RESIDENTIAL APPLIANCES.
10. SEE 'Q' SERIES DRAWINGS FOR TOILET ACCESSORIES AND ADA CLEAR FLOOR SPACES.
11. SEE 'I' SERIES DRAWINGS FOR INTERIOR FINISH DETAILS.

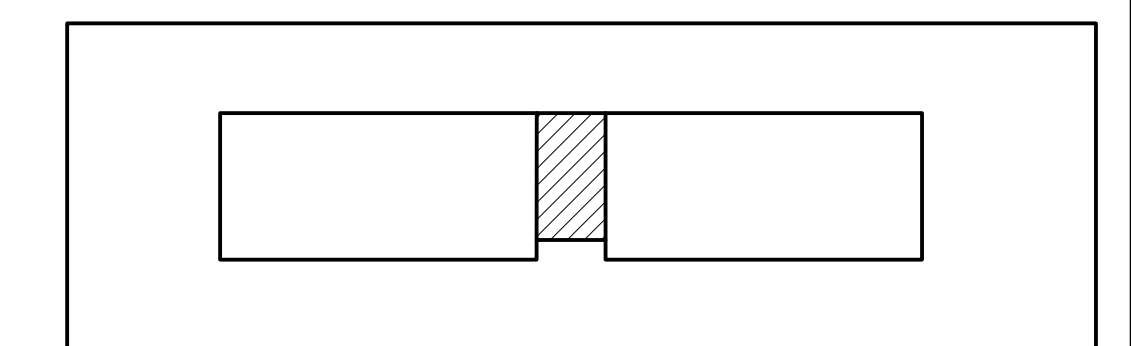
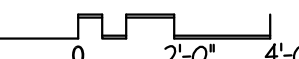
Area Summary

- 17,597 s.f. (gross s.f. building)
- 2,754 s.f. (common s.f.)
- 14,843 s.f. (apartment s.f.)



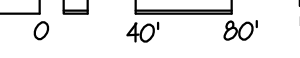
Enlarged Partial Reflected Ceiling Plan
Central Common Area

full size plot scale: 1/4"=1'-0"



Key Plan

full size plot scale: 1"=80'



NOTE: THIS DRAWING IS INTENDED TO BE PLOTTED IN COLOR. IF THIS SHEET APPEARS IN BLACK AND WHITE, IT IS PLOTTED INCORRECTLY. DISCARD AND OBTAIN AN ACCURATE DRAWING

Notice
The Architect/Engineer does not define the scope of individual trades, subcontractors, material suppliers, or vendors. Any sheet numbering system used which identifies disciplines is solely for the Architect/Engineer's convenience, and is not intended to define a subcontractor's scope of work. Information regarding individual trades, subcontractors, material suppliers, and vendors may be detailed, described and indicated at different locations throughout these documents. No consideration will be given to requests for change orders for failure to obtain and review the complete set of drawings and specifications when preparing bids, prices, and quotations.

Drawn	JK, dk
Checked by	JH
Project No.	168011
Date	04-08-2016

